

PIR APPLICATION BOOK

Silicon Valley, 3003 North First Street
San Jose, CA 95134
TEL USA +1 415 779 5317
TEL KOR +82 70 7605 1652
www.fresnelfactory.com

Introduction

Fresnel Factory Inc. is the unique USA and Korean based manufacturer having technology for Fresnel lens. We started our business since 2002 and incorporated in 2013 and have intensified core competence in the development by venture certification and establishment of R&D center.

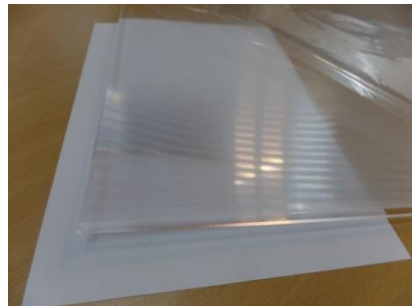
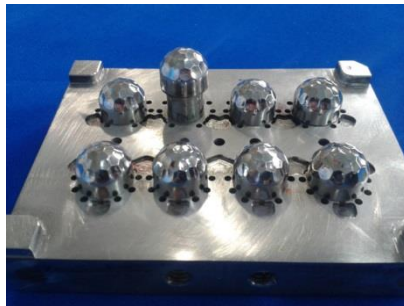
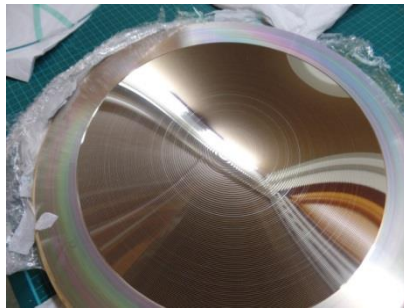
Going beyond the simple supply of optic components, Fresnel Factory produces and supplies custom-made optic devices to fit all requirements from all customers based on the capabilities of optic design and tool making technologies. The developed products are applied to display, LED lighting, motion detection sensors and photovoltaic apparatus.

Fresnel technology is spotlighted again as the technology in many areas. So, we are making alliances with many companies in optic and display fields.



Certifications

- Certified R&D Center
- RoHS / REACH certified
- INNOBIZ certified
- Certified as Export Frontier Firm
- ISO 14001:2015 certified
- ISO 9001:2015 certified



Silicon Valley, 3003 North First Street
 San Jose, CA 95134
 TEL USA +1 415 779 5317
 TEL KOR +82 70 7605 1652
www.fresnelfactory.com

PIR Fresnel Lens

Part# : PD09-12008W

Description

Ceiling/Wall Mount & Clip-on Array (120°)

PD09-12008 Lens Specification

- Circular lens with $\varnothing 18$ mm x 13.94 mm
- 9 mm focal length
- 8 meter range
- Horizontal & Vertical 120°

Application

Wall or ceiling mount for office or meeting room lighting and HVAC control.

- Lighting control
- HVAC control
- Meeting rooms

Quotation

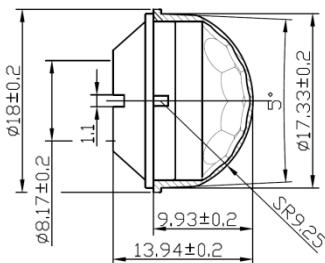
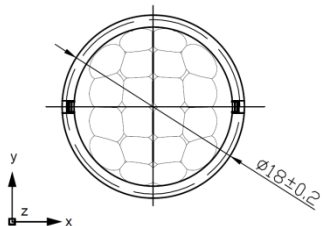
Retail \$1.550

1K \$1.000

3K \$0.370

5K \$0.295

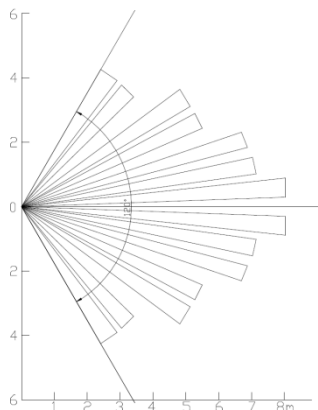
Dimension (unit : mm)



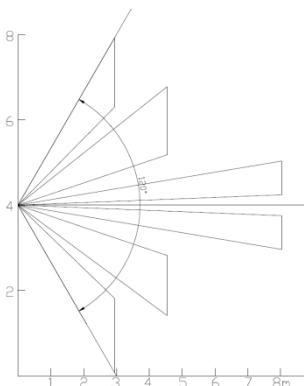
blink
an amazon company



Range of detection (unit : m)



TOP VIEW (y)



SIDE VIEW (x)

Blink

PIR Fresnel Lens

Part# : PD09-12008B

Description

Ceiling/Wall Mount & Clip-on Array (120°)

PD09-12008 Lens Specification

- Circular lens with $\varnothing 18$ mm x 13.94 mm
- 9 mm focal length
- 8 meter range
- Horizontal & Vertical 120°

Application

Wall or ceiling mount for office or meeting room lighting and HVAC control.

- Lighting control
- HVAC control
- Meeting rooms

Quotation

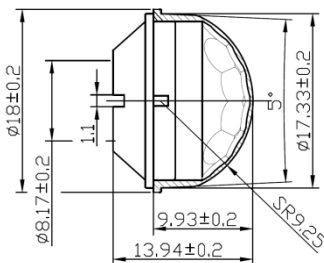
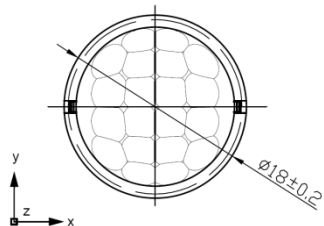
Retail \$1.550

1K \$1.000

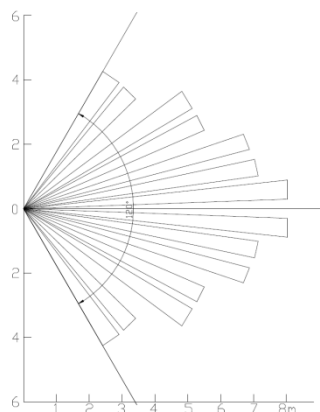
3K \$0.370

5K \$0.295

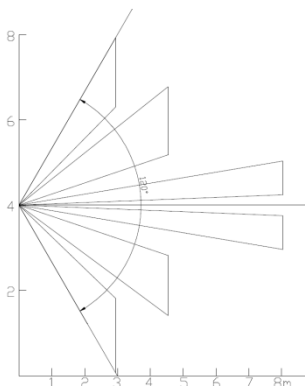
Dimension (unit : mm)



Range of detection (unit : m)



TOP VIEW (y)



SIDE VIEW (x)

Blink XT

PIR Fresnel Lens

Part# : PD06-12008W

Description

Ceiling/Wall Mount & Clip-on Array (120°)

PD06-12008 Lens Specification

- Circular lens with $\varnothing 14$ mm x 10.4 mm
- 6 mm focal length
- 8 meter range
- Horizontal & Vertical 120°

Application

Wall or ceiling mount for office or meeting room lighting and HVAC control.

- Lighting control
- HVAC control
- Meeting rooms

Quotation

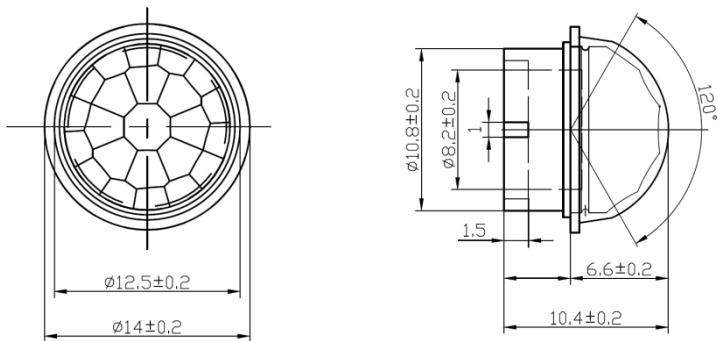
Retail \$1.550

1K \$1.000

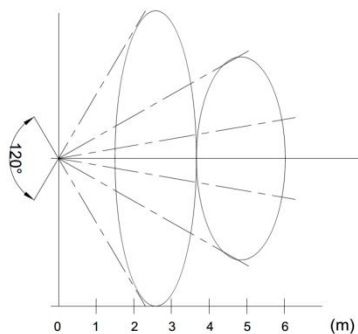
3K \$0.370

5K \$0.295

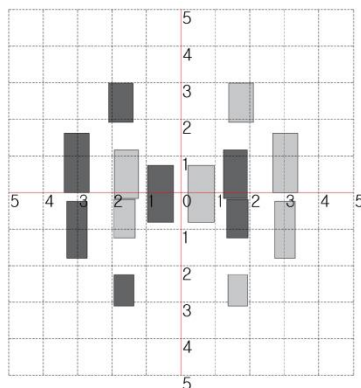
Dimension (unit : mm)



Range of detection (unit : m)



TOP VIEW



Front View @5m



SmartThings Motion Sensor

PIR Fresnel Lens

Part# : PD06-S(Customized)

Description

Ceiling/Wall Mount & Clip-on Array (120°)

PD06-S Lens Specification

- Circular lens with $\varnothing 14$ mm x 10.4 mm
- 6 mm focal length
- 8 meter range
- Horizontal & Vertical 120°

Application

Wall or ceiling mount for office or meeting room lighting and HVAC control.

- Lighting control
- HVAC control
- Meeting rooms



Quotation

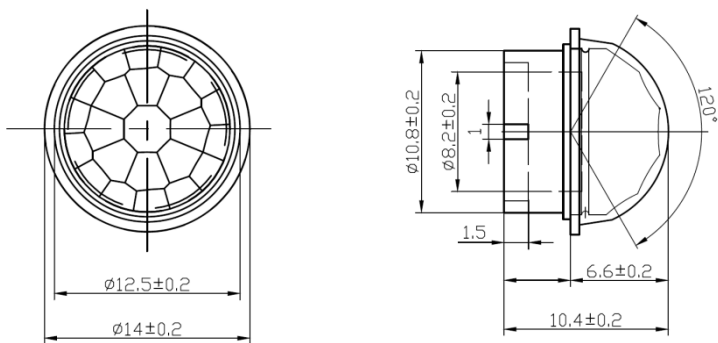
Retail \$1.550

1K \$1.000

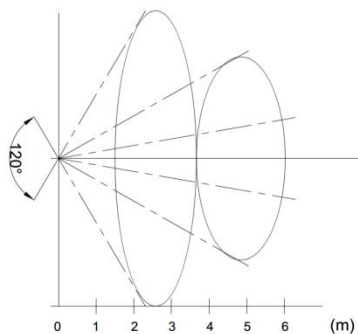
3K \$0.370

5K \$0.295

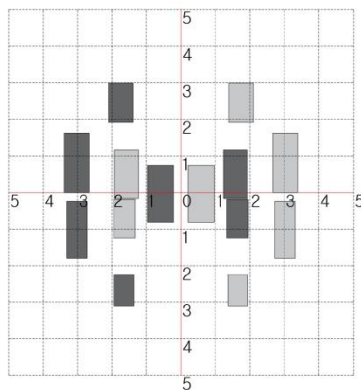
Dimension (unit : mm)



Range of detection (unit : m)



TOP VIEW



Front View @5m

SmartThings Motion Sensor

PIR Fresnel Lens

Part# : PD05-12005W

Description

Ceiling/Wall Mount & Clip-on Array (120°)

PD05-12005 Lens Specification

- Circular lens with $\varnothing 11.8$ mm x 9.73 mm
- 5 mm focal length
- 5 meter range
- Horizontal & Vertical 120°

Application

Wall or ceiling mount for office or meeting room lighting and HVAC control.

- Lighting control
- HVAC control
- Meeting rooms

Quotation

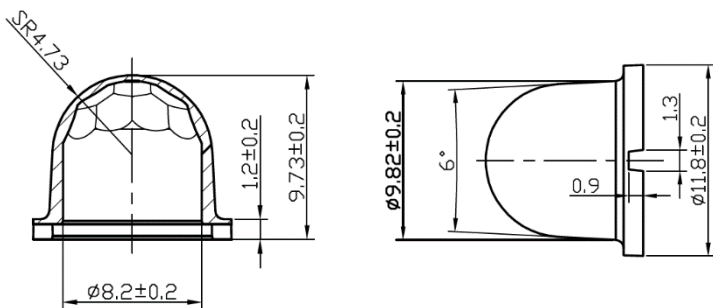
Retail \$1.550

1K \$1.000

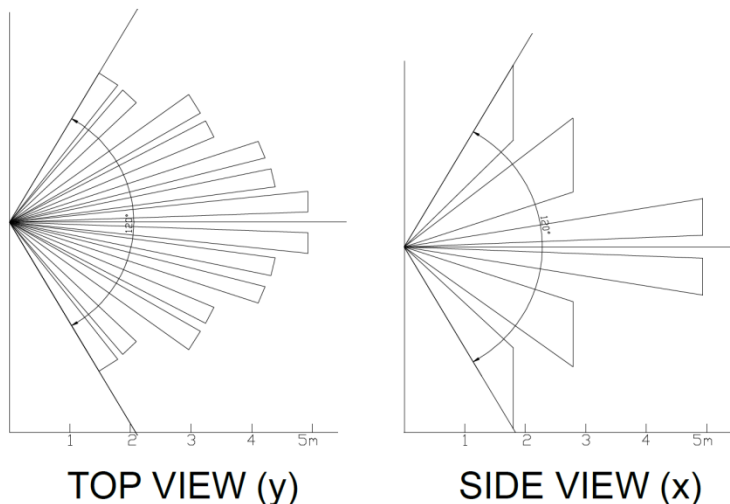
3K \$0.370

5K \$0.295

Dimension (unit : mm)



Range of detection (unit : m)



Canary Motion Sensor

PIR Fresnel Lens

Part# : PD06-12002B

Description

Wall Mount & Clip-on Array (120°)

PD06-12002 Lens Specification

- Circular lens with $\varnothing 13.1$ mm x 7.2 mm
- 6 mm focal length
- 2 meter range
- Horizontal & Vertical 120°

Application

Wall mount for smart lock and doorbell.

- Smart lock
- Doorbell
- Entrance

Quotation

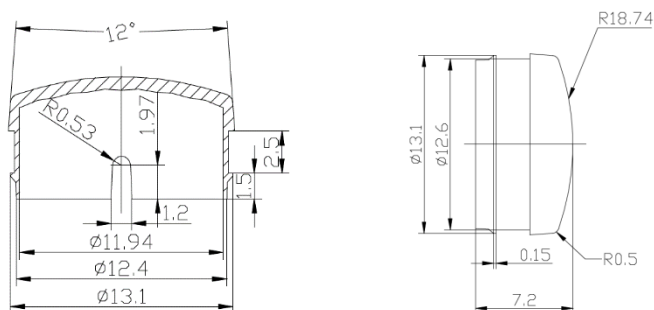
Retail \$1.550

1K \$1.000

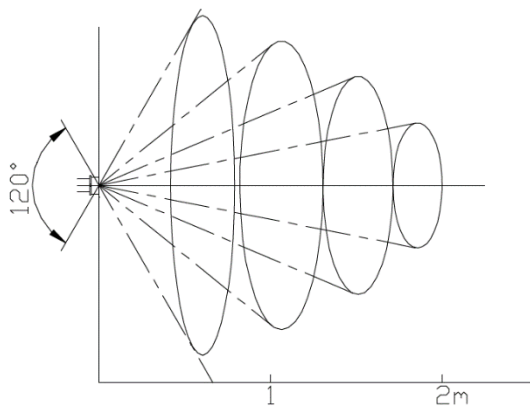
3K \$0.370

5K \$0.295

Dimension (unit : mm)



Range of detection (unit : m)



TOP VIEW & SIDE VIEW



Altro Smart Lock

PIR Fresnel Lens

Part# : PD08-6003B

Description

Wall Mount & Door-Bell Array (60°)

PD08-6003 Lens Specification

- 10 mm x 26 mm flat Fresnel
- 8 mm focal length
- 3 meter range
- Horizontal 60°, Vertical 20°

Application

Occupancy and proximity sensing with narrow pattern.

- Doorbell
- IoT device
- Kiosk/display control

Quotation

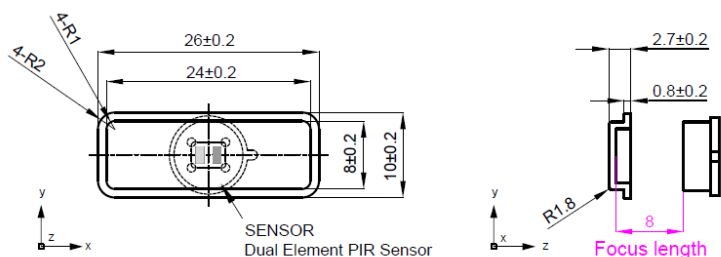
Retail \$1.550

1K \$1.000

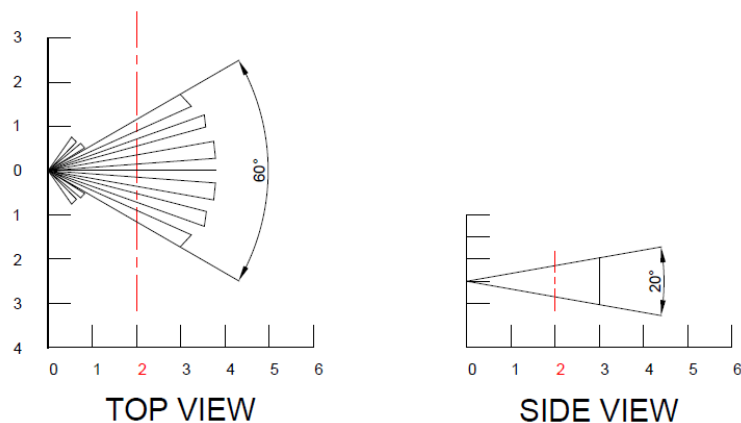
3K \$0.370

5K \$0.295

Dimension (unit : mm)



Range of detection (unit : m)



Blink Video Doorbell

PIR Fresnel Lens

Part# : PD08-6003B

Description

Wall Mount & Door-Bell Array (60°)

PD08-6003 Lens Specification

- 10 mm x 26 mm flat Fresnel
- 8 mm focal length
- 3 meter range
- Horizontal 60°, Vertical 20°

Application

Occupancy and proximity sensing with narrow pattern.

- Doorbell
- IoT device
- Kiosk/display control

Quotation

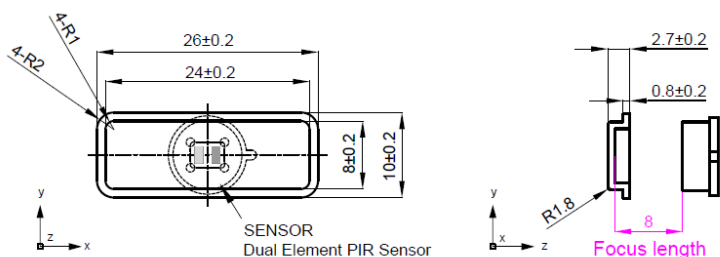
Retail \$1.550

1K \$1.000

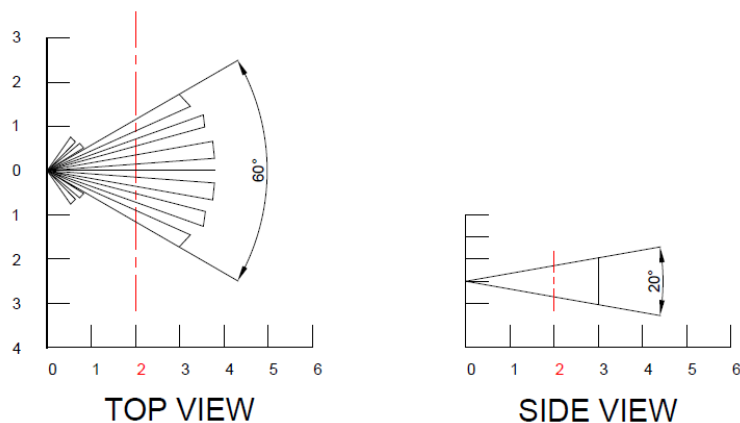
3K \$0.370

5K \$0.295

Dimension (unit : mm)



Range of detection (unit : m)



OLIVE & DOVE



Olive & Dove RemoBell

PIR Fresnel Lens

Part# : PD15-12010W

Description

Ceiling Mount Array (360°)

PD15-12010 Lens Specification

- Circular lens with $\varnothing 35.7$ mm x 11.5 mm
- 15 mm focal length
- 5 m radius at 2.5 m height
- 4:1 diameter-to-height floor coverage

Application

Ceiling mount for standard commercial heights.

- Lighting control
- HVAC control
- Meeting rooms

Quotation

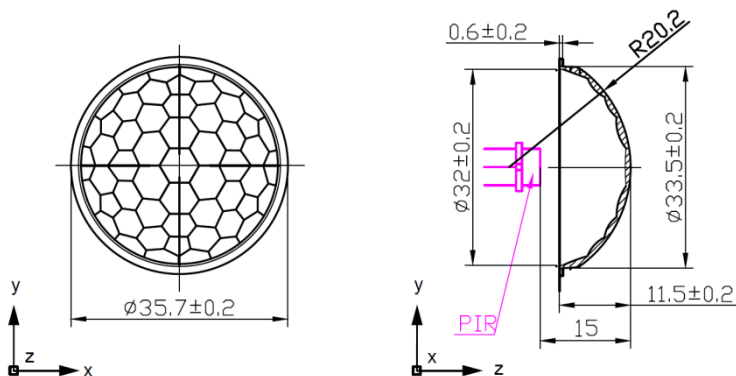
Retail \$1.550

1K \$1.000

3K \$0.370

5K \$0.295

Dimension (unit : mm)

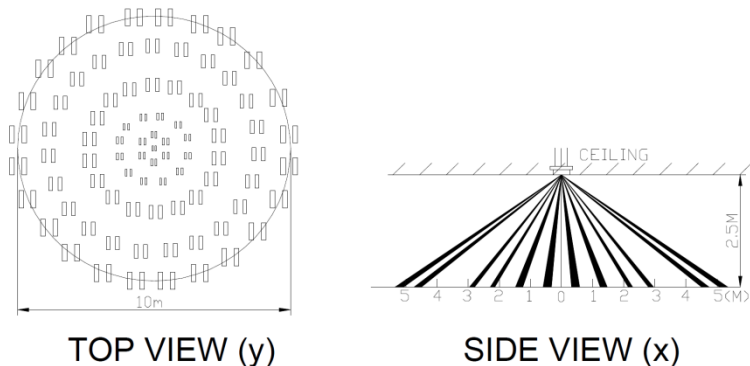


LOXONE



LOXONE Motion Sensor

Range of detection (unit : m)



PIR Fresnel Lens

Part# : PD15-36007W

Description

Ceiling Mount Array (360°)

PD15-36007 Lens Specification

- Circular lens with $\text{Ø}49$ mm x 2.6 mm
- 15 mm focal length
- 7 m radius at 2.5 m height
- 4:1 diameter-to-height floor coverage

Application

Ceiling mount for standard commercial heights.

- Lighting control
- HVAC control
- Meeting rooms

Quotation

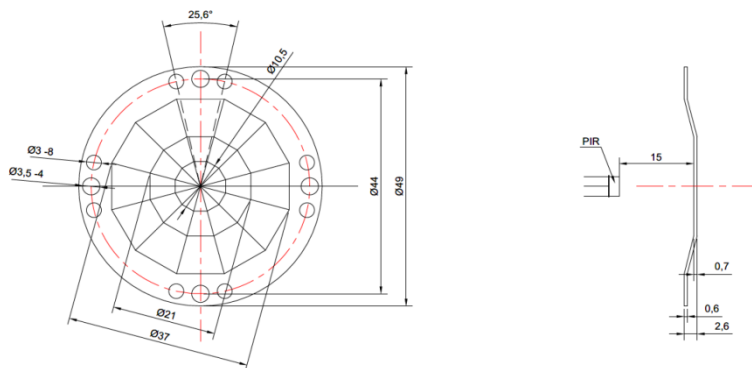
Retail \$1.550

1K \$1.000

3K \$0.370

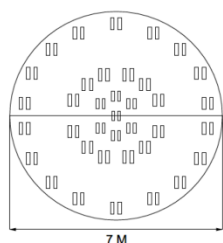
5K \$0.295

Dimension (unit : mm)

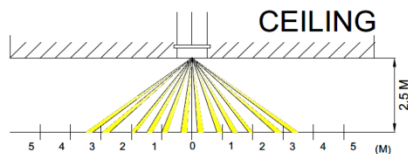


CONUS Motion Sensor

Range of detection (unit : m)



TOP VIEW



SIDE VIEW

PIR Fresnel Lens

Part# : FD08-10005W/B

Description

Ceiling/Wall Mount Array (100°)

FD08-10005 Lens Specification

- Square & Flat lens with 23 mm x 23 mm
- 8 mm focal length
- 5 meter range
- Horizontal & Vertical 100°

Application

Wall or ceiling mount for office and IoT device

- Lighting control
- IoT device
- Meeting rooms

Quotation

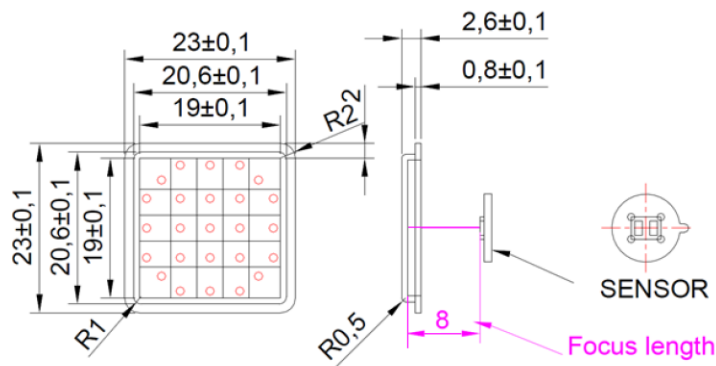
Retail \$1.550

1K \$1.000

3K \$0.370

5K \$0.295

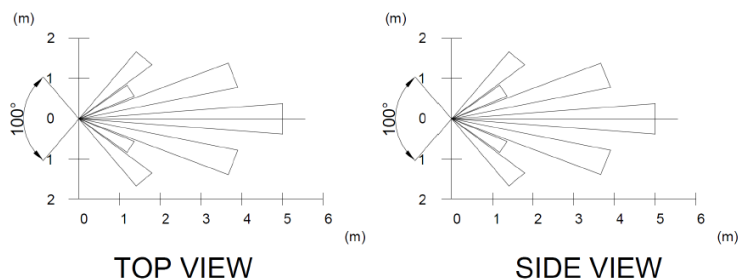
Dimension (unit : mm)



FD08-10005 lens is recommended to below :

- Avoid traditional design of lens
- Free from touching lens
- Desire to make fancy design of product
- Want to get wide detection even with flat shape

Range of detection (unit : m)



Useful link

1. [PIR Design request form](#)

<https://app.smartsheet.com/b/form/9ba8c9fb6f154a058321377250b14f3a>

2. [Application book](#)

<https://drive.google.com/open?id=1d0ygO6aEGjn3mVwV-hDMsGjJ3-dXNScv>

3. [PIR lens list](#)

<https://drive.google.com/open?id=0B9EILyf56YUWLTktVU1pTTNFWkk>

4. [RE200GE for battery powered device](#)

<https://drive.google.com/open?id=0B9EILyf56YUWUVVCZXA4RVdldjQ>

5. [Sample Order](#)

www.FresnelFactory.com

FresnelFactory

Inquiry : ashton@fresnelfactory.com

Silicon Valley, 3003 North First Street
San Jose, CA 95134
TEL USA +1 415 779 5317
TEL KOR +82 70 7605 1652
www.fresnelfactory.com

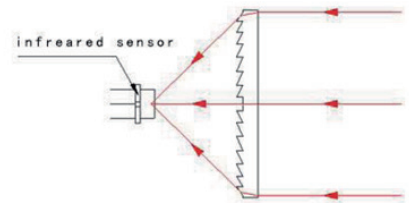
PIR series Fresnel lens(Ver.3)

The red outwire lens features:

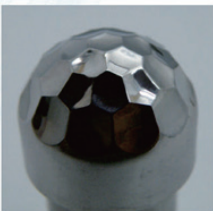
The IR fresnel lens, be extensively apply in the clay influence the switch, Annunciator, IR thermo scope, IR formation of a imagine and so on, can provide different induce angle, distance, size of the fresnel lens for customer.

Point of Contact
 Oversea sales
 Myung Joong KIM
 kim.diypro@gmail.com
 +82 70-7605-1652

PIR series Fresnel lens



Product picture



Mold Cavity



security purpose
PIR sensor



Infrared detection module

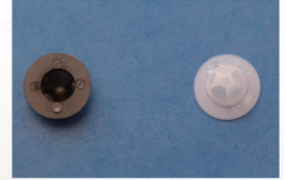
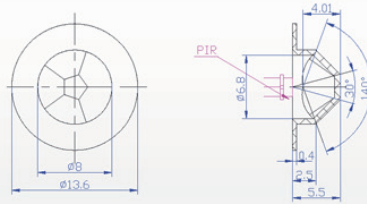


Pyroelectric lens for
motion detector

PIR series Fresnel lens(Ver.3)

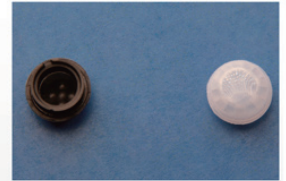
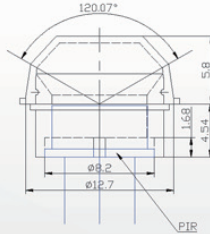
PD55-14006

FOCUS	5.5mm
ANGLE	140°
LENGTH	6m
MATERIAL	HDPE
UNIT	mm
TYPE	PIR



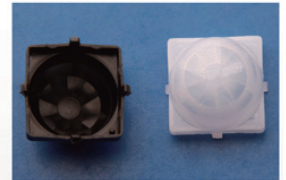
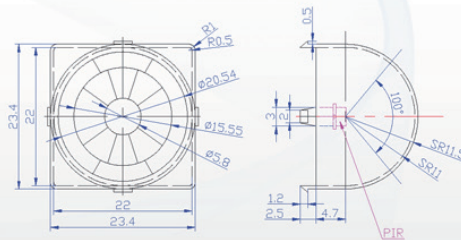
PD60-12008

FOCUS	6mm
ANGLE	120°
LENGTH	8m
MATERIAL	HDPE
UNIT	mm
TYPE	PIR



PD105-10010S

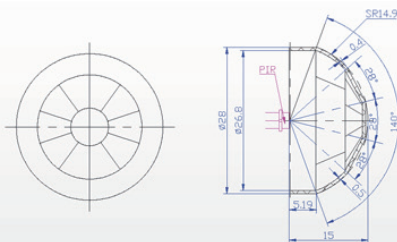
FOCUS	10.5mm
ANGLE	100°
LENGTH	10m
MATERIAL	HDPE
UNIT	mm
TYPE	PIR



PIR series Fresnel lens (Ver.3)

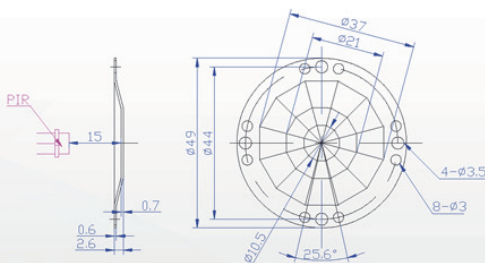
PD15-14006

FOCUS	15mm
ANGLE	140°
LENGTH	6m
MATERIAL	HDPE
UNIT	mm
TYPE	PIR



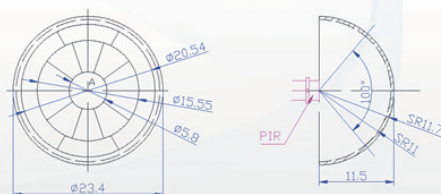
PD15-36007

FOCUS	15mm
ANGLE	360°
LENGTH	7m
MATERIAL	HDPE
UNIT	mm
TYPE	PIR



PD105-10010

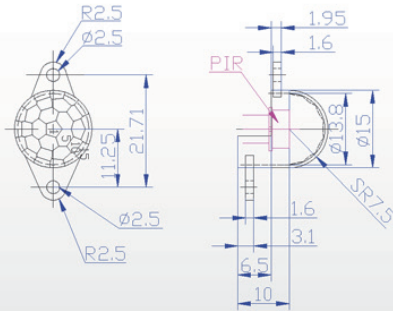
FOCUS	10.5mm
ANGLE	360°
LENGTH	10m
MATERIAL	HDPE
UNIT	mm
TYPE	PIR



PIR series Fresnel lens (Ver.3)

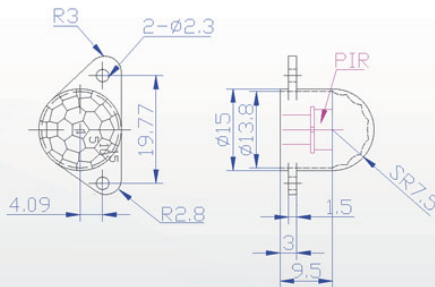
PD75-12005A

FOCUS	7.5mm
ANGLE	120°
LENGTH	5m
MATERIAL	HDPE
UNIT	mm
TYPE	PIR



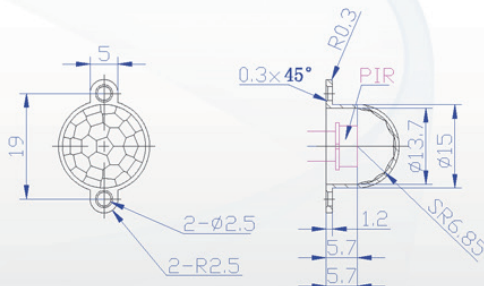
PD75-12005B

FOCUS	7.5mm
ANGLE	120°
LENGTH	5m
MATERIAL	HDPE
UNIT	mm
TYPE	PIR



PD75-12005C

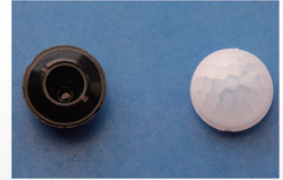
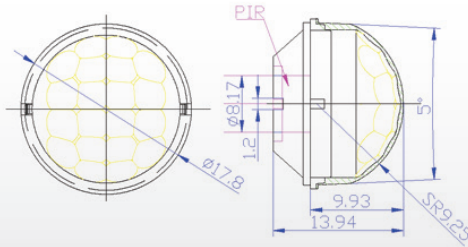
FOCUS	7.5mm
ANGLE	120°
LENGTH	5m
MATERIAL	HDPE
UNIT	mm
TYPE	PIR



PIR series Fresnel lens (Ver.3)

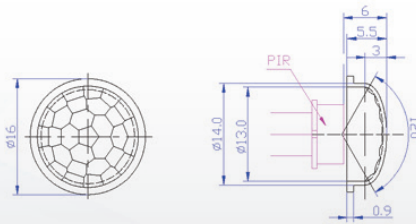
PD09-12008W / PD09-12008B

FOCUS	9mm
ANGLE	120°
LENGTH	8m
MATERIAL	HDPE
UNIT	mm
TYPE	PIR



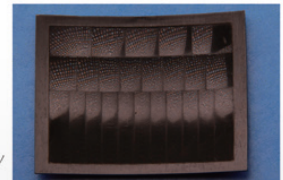
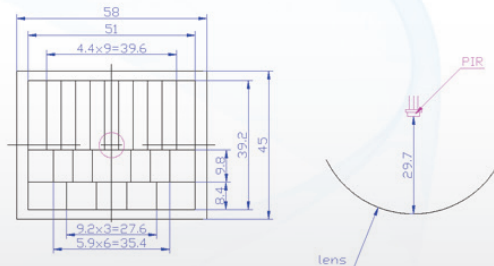
PD06-12005

FOCUS	6mm
ANGLE	120°
LENGTH	5m
MATERIAL	HDPE
UNIT	mm
TYPE	PIR



PF297-79810

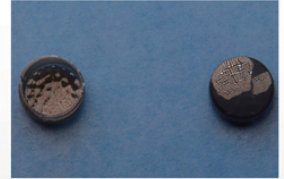
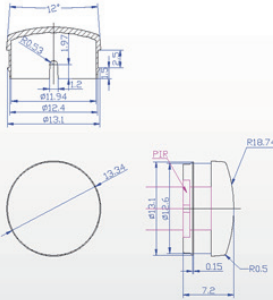
FOCUS	7.5mm
ANGLE	120°
LENGTH	5m
MATERIAL	HDPE
UNIT	mm
TYPE	PIR



PIR series Fresnel lens (Ver.3)

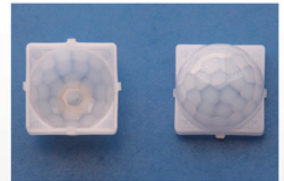
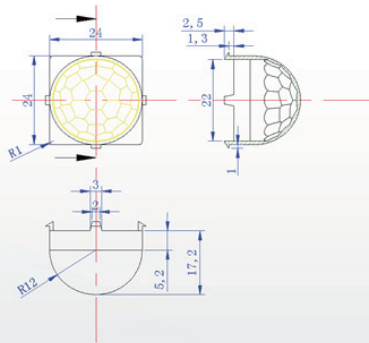
PD06-12002B

FOCUS	7.5mm
ANGLE	120°
LENGTH	5m
MATERIAL	HDPE
UNIT	mm
TYPE	PIR



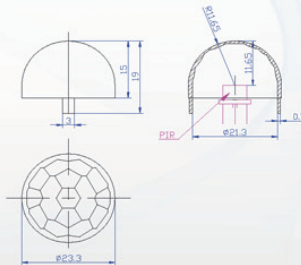
PD12-12010

FOCUS	7.5mm
ANGLE	120°
LENGTH	5m
MATERIAL	HDPE
UNIT	mm
TYPE	PIR



PD116-12010

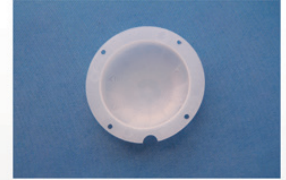
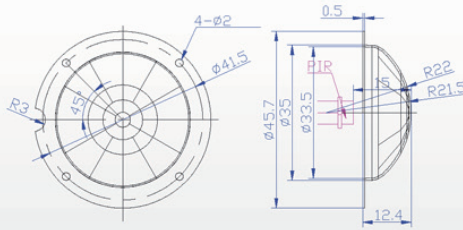
FOCUS	7.5mm
ANGLE	120°
LENGTH	5m
MATERIAL	HDPE
UNIT	mm
TYPE	PIR



PIR series Fresnel lens (Ver.3)

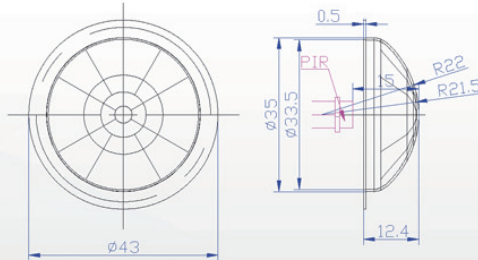
PD15-36010P

FOCUS	15mm
ANGLE	360°
LENGTH	10m
MATERIAL	HDPE
UNIT	mm
TYPE	PIR



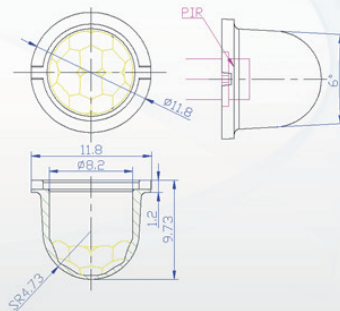
PD15-36010

FOCUS	15mm
ANGLE	360°
LENGTH	10m
MATERIAL	HDPE
UNIT	mm
TYPE	PIR



PD05-12005W / B

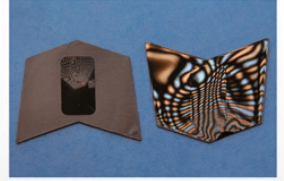
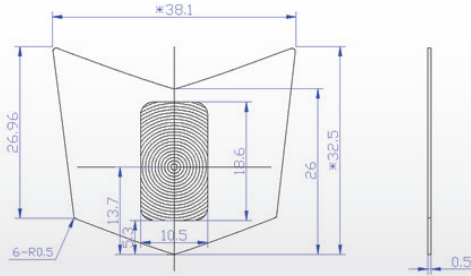
FOCUS	5mm
ANGLE	120°
LENGTH	5m
MATERIAL	HDPE
UNIT	mm
TYPE	PIR



PIR series Fresnel lens (Ver.3)

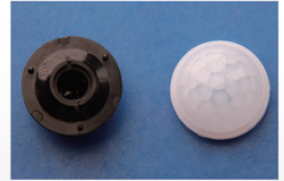
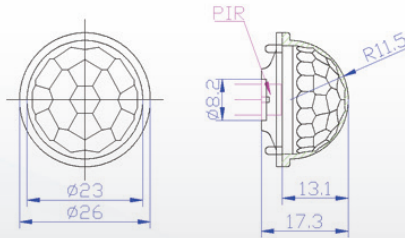
PF20-3027

FOCUS	20mm
ANGLE	30°
LENGTH	27m
MATERIAL	HDPE
UNIT	mm
TYPE	PIR



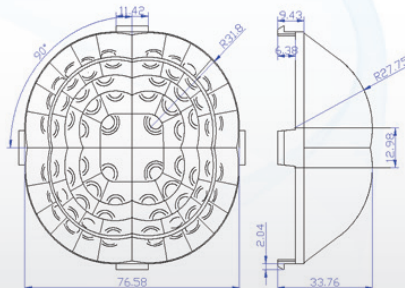
PD115-12010

FOCUS	11.5mm
ANGLE	120°
LENGTH	10m
MATERIAL	HDPE
UNIT	mm
TYPE	PIR



PD30-36010

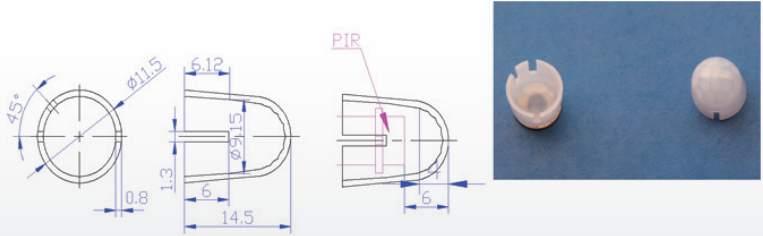
FOCUS	30mm
ANGLE	360°
LENGTH	10m
MATERIAL	HDPE
UNIT	mm
TYPE	PIR



PIR series Fresnel lens (Ver.3)

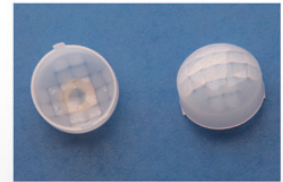
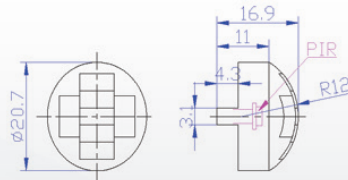
PD06-6005

FOCUS	6mm
ANGLE	60°
LENGTH	5m
MATERIAL	HDPE
UNIT	mm
TYPE	PIR



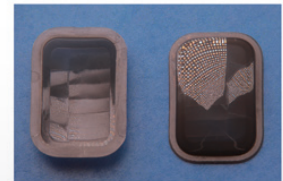
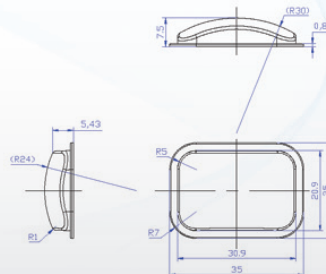
PD076-9005

FOCUS	7.6mm
ANGLE	90°
LENGTH	5m
MATERIAL	HDPE
UNIT	mm
TYPE	PIR



PD23-6020

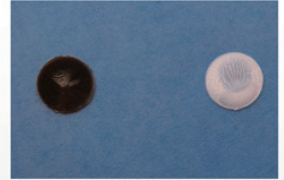
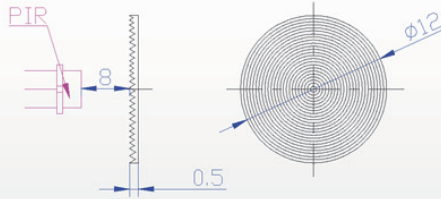
FOCUS	23mm
ANGLE	60°
LENGTH	20m
MATERIAL	HDPE
UNIT	mm
TYPE	PIR



PIR series Fresnel lens (Ver.3)

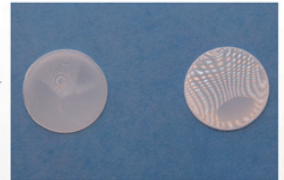
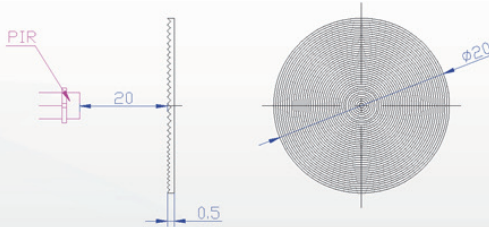
PF08-10B

FOCUS	8mm
ANGLE	
LENGTH	10m
MATERIAL	HDPE
UNIT	mm
TYPE	PIR



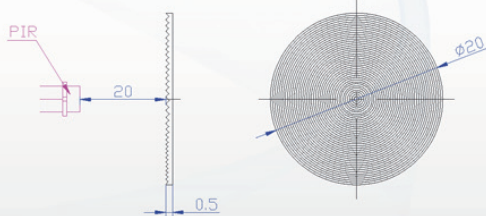
PF20-10WS

FOCUS	20mm
ANGLE	120°
LENGTH	10m
MATERIAL	HDPE
UNIT	mm
TYPE	PIR



PF20-10B

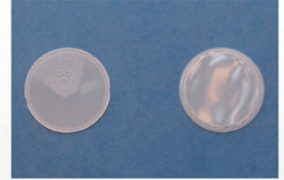
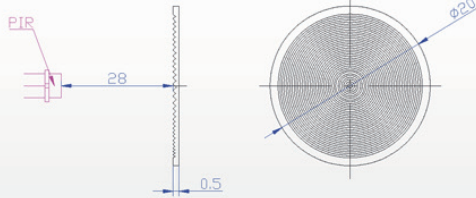
FOCUS	20mm
ANGLE	
LENGTH	10m
MATERIAL	HDPE
UNIT	mm
TYPE	PIR



PIR series Fresnel lens (Ver.3)

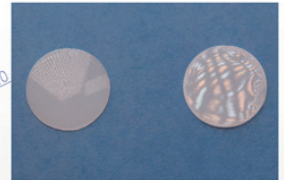
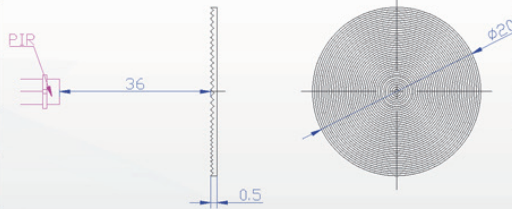
PF28-10W

FOCUS	28mm
ANGLE	
LENGTH	10m
MATERIAL	HDPE
UNIT	mm
TYPE	PIR



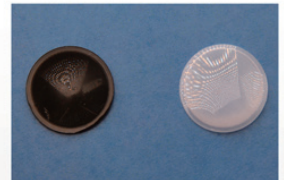
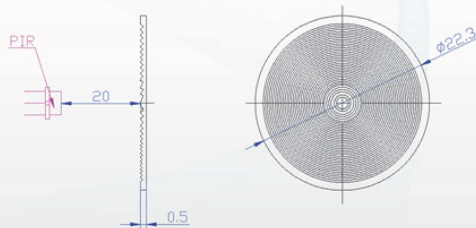
PF36-10W

FOCUS	36mm
ANGLE	
LENGTH	10m
MATERIAL	HDPE
UNIT	mm
TYPE	PIR



PF20-10W

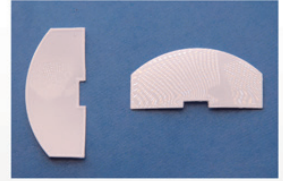
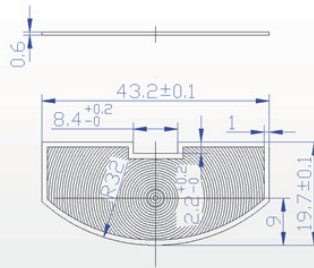
FOCUS	20mm
ANGLE	
LENGTH	10m
MATERIAL	HDPE
UNIT	mm
TYPE	PIR



PIR series Fresnel lens(Ver.3)

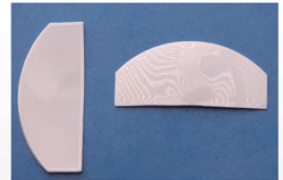
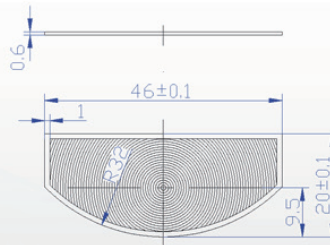
PF30-12012C

FOCUS	30mm
ANGLE	120°
LENGTH	12m
MATERIAL	HDPE
UNIT	mm
TYPE	PIR



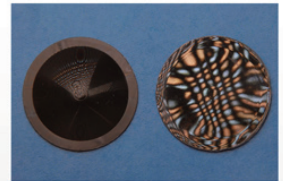
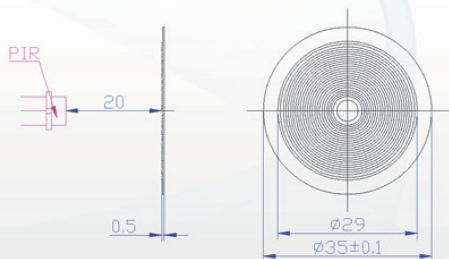
PF30-12012S

FOCUS	30mm
ANGLE	120°
LENGTH	12m
MATERIAL	HDPE
UNIT	mm
TYPE	PIR



PF20-06015

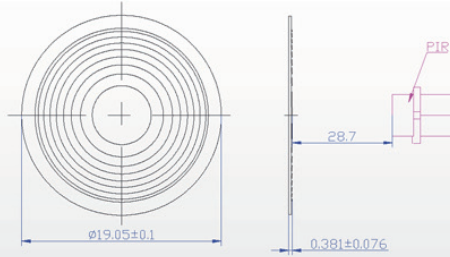
FOCUS	20mm
ANGLE	60°
LENGTH	15m
MATERIAL	HDPE
UNIT	mm
TYPE	PIR



PIR series Fresnel lens(Ver.3)

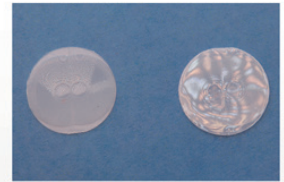
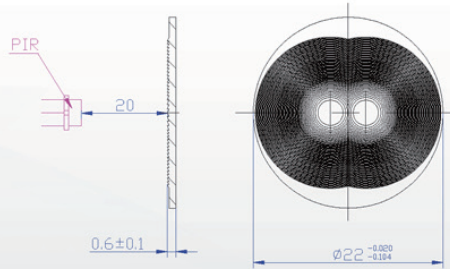
PF28

FOCUS	28.7mm
ANGLE	
LENGTH	
MATERIAL	HDPE
UNIT	mm
TYPE	PIR



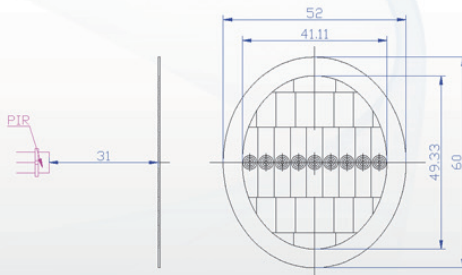
PF20-10

FOCUS	20mm
ANGLE	
LENGTH	10mm
MATERIAL	HDPE
UNIT	mm
TYPE	PIR



PF31-12012

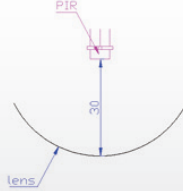
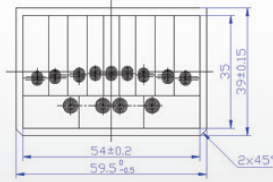
FOCUS	31mm
ANGLE	120°
LENGTH	12mm
MATERIAL	HDPE
UNIT	mm
TYPE	PIR



PIR series Fresnel lens (Ver.3)

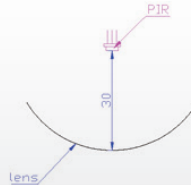
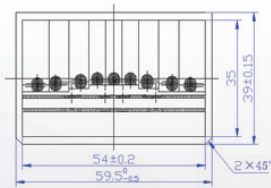
PF30-12012

FOCUS	30mm
ANGLE	120°
LENGTH	12m
MATERIAL	HDPE
UNIT	mm
TYPE	PIR



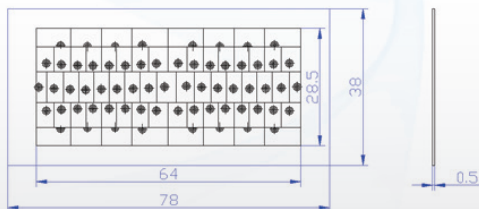
PF30-12012P

FOCUS	30mm
ANGLE	120°
LENGTH	12m
MATERIAL	HDPE
UNIT	mm
TYPE	PIR



PF21-12015

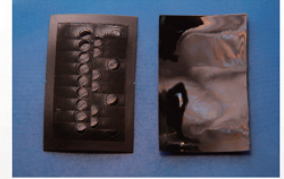
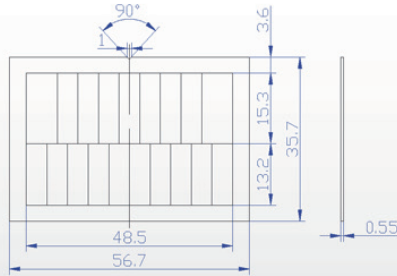
FOCUS	21mm
ANGLE	120°
LENGTH	15m
MATERIAL	HDPE
UNIT	mm
TYPE	PIR



PIR series Fresnel lens (Ver.3)

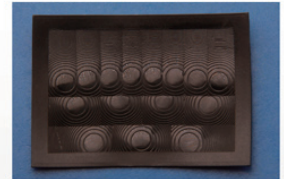
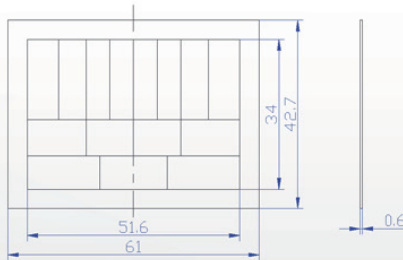
PF23-11012

FOCUS	23mm
ANGLE	110°
LENGTH	12m
MATERIAL	HDPE
UNIT	mm
TYPE	PIR



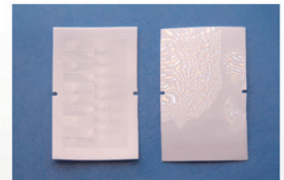
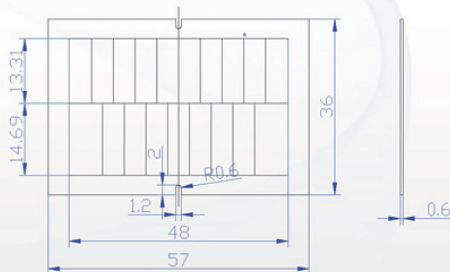
PF305-8324

FOCUS	30.5mm
ANGLE	83°
LENGTH	24m
MATERIAL	HDPE
UNIT	mm
TYPE	PIR



PF22-10010

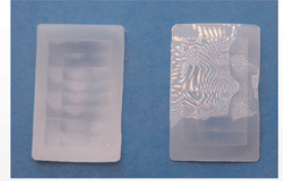
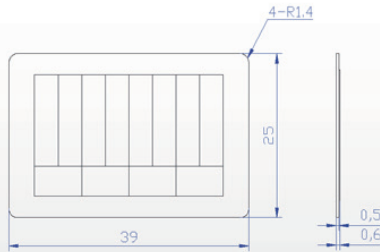
FOCUS	22mm
ANGLE	100°
LENGTH	10m
MATERIAL	HDPE
UNIT	mm
TYPE	PIR



PIR series Fresnel lens (Ver.3)

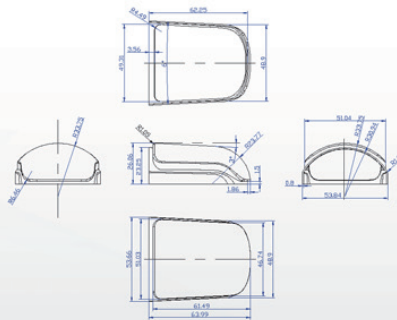
PF20-8907

FOCUS	20mm
ANGLE	89°
LENGTH	7m
MATERIAL	HDPE
UNIT	mm
TYPE	PIR



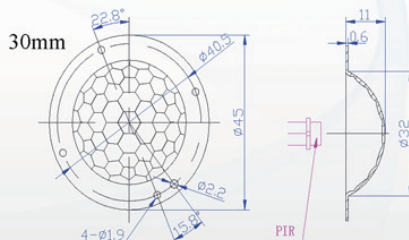
PD30-0000

FOCUS	30mm
ANGLE	
LENGTH	
MATERIAL	HDPE
UNIT	mm
TYPE	PIR



PD175-36005

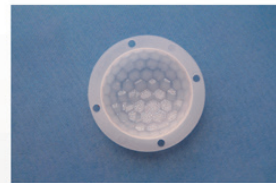
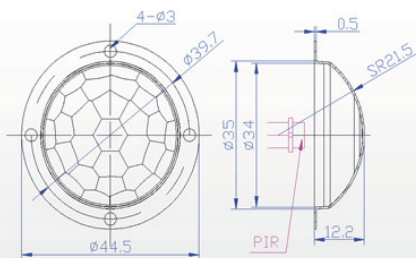
FOCUS	17.5mm
ANGLE	360°
LENGTH	5m
MATERIAL	HDPE
UNIT	mm
TYPE	PIR



PIR series Fresnel lens (Ver.3)

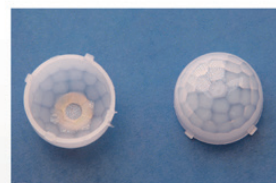
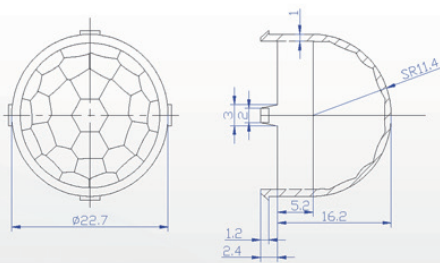
PD15-36005A

FOCUS	15mm
ANGLE	360°
LENGTH	5m
MATERIAL	HDPE
UNIT	mm
TYPE	PIR



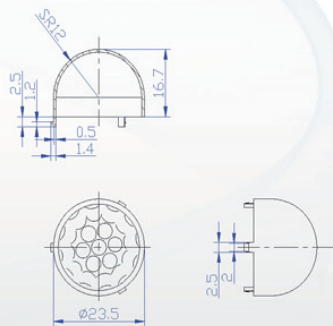
PD105-10005

FOCUS	10.5mm
ANGLE	100°
LENGTH	5m
MATERIAL	HDPE
UNIT	mm
TYPE	PIR



PD12-11612

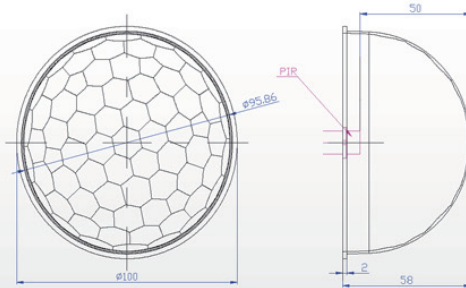
FOCUS	12mm
ANGLE	116°
LENGTH	12m
MATERIAL	HDPE
UNIT	mm
TYPE	PIR



PIR series Fresnel lens (Ver.3)

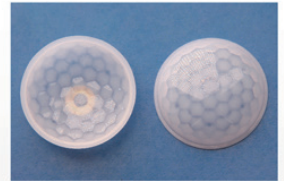
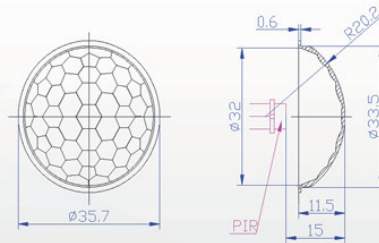
PD50-12008

FOCUS	50mm
ANGLE	120°
LENGTH	8m
MATERIAL	HDPE
UNIT	mm
TYPE	PIR



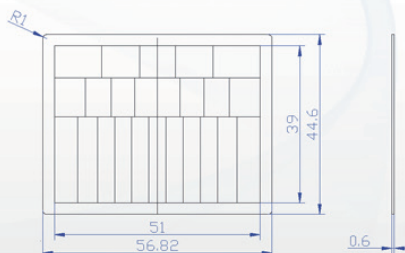
PD15-12010

FOCUS	15mm
ANGLE	120°
LENGTH	10m
MATERIAL	HDPE
UNIT	mm
TYPE	PIR



PF297-79810R

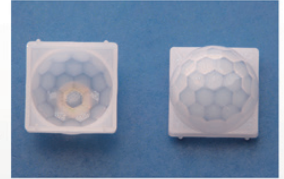
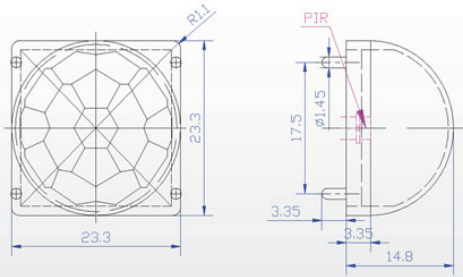
FOCUS	29.7mm
ANGLE	79.8°
LENGTH	10m
MATERIAL	HDPE
UNIT	mm
TYPE	PIR



PIR series Fresnel lens (Ver.3)

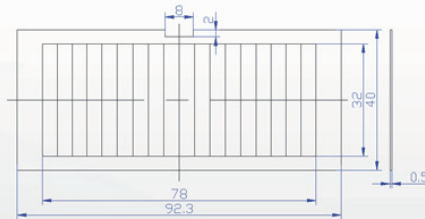
PD105-10010F

FOCUS	10.5mm
ANGLE	100°
LENGTH	10m
MATERIAL	HDPE
UNIT	mm
TYPE	PIR



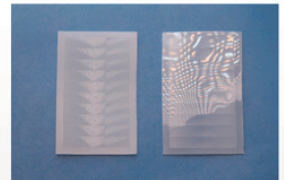
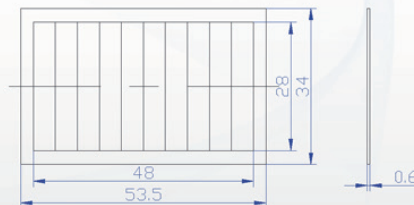
PF25-12012

FOCUS	25mm
ANGLE	120°
LENGTH	12m
MATERIAL	HDPE
UNIT	mm
TYPE	PIR



PF25-9010

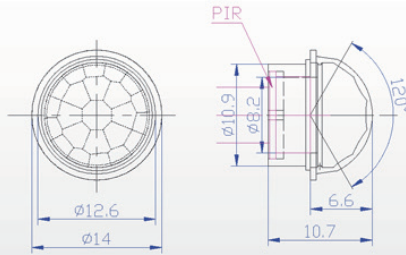
FOCUS	25mm
ANGLE	90°
LENGTH	10m
MATERIAL	HDPE
UNIT	mm
TYPE	PIR



PIR series Fresnel lens (Ver.3)

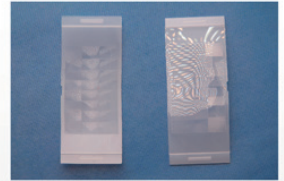
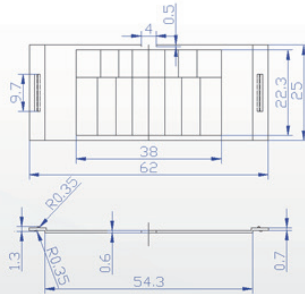
PD06-12008

FOCUS	6mm
ANGLE	120°
LENGTH	8m
MATERIAL	HDPE
UNIT	mm
TYPE	PIR



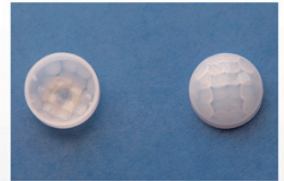
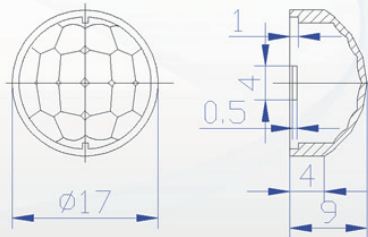
PF16-12012

FOCUS	16mm
ANGLE	120°
LENGTH	12m
MATERIAL	HDPE
UNIT	mm
TYPE	PIR



PD05-9005

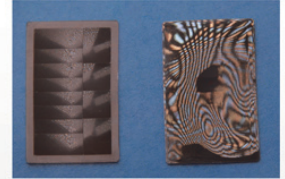
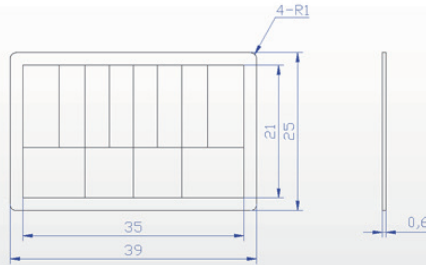
FOCUS	5mm
ANGLE	90°
LENGTH	5m
MATERIAL	HDPE
UNIT	mm
TYPE	PIR



PIR series Fresnel lens (Ver.3)

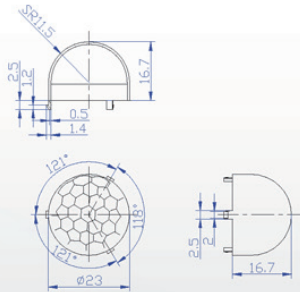
PF23-6020

FOCUS	23mm
ANGLE	60°
LENGTH	20m
MATERIAL	HDPE
UNIT	mm
TYPE	PIR



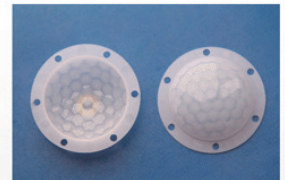
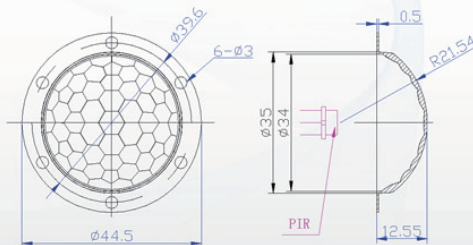
PD11-12010

FOCUS	11mm
ANGLE	120°
LENGTH	10m
MATERIAL	HDPE
UNIT	mm
TYPE	PIR



PD15-36005B

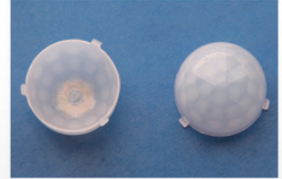
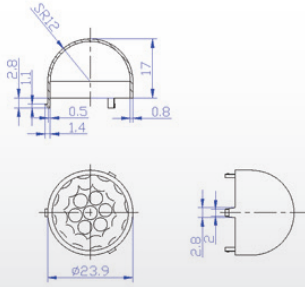
FOCUS	15mm
ANGLE	360°
LENGTH	5m
MATERIAL	HDPE
UNIT	mm
TYPE	PIR



PIR series Fresnel lens (Ver.3)

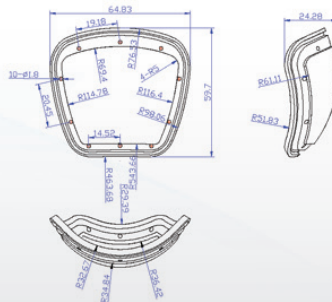
PD12-11607

FOCUS	12mm
ANGLE	116°
LENGTH	7m
MATERIAL	HDPE
UNIT	mm
TYPE	PIR



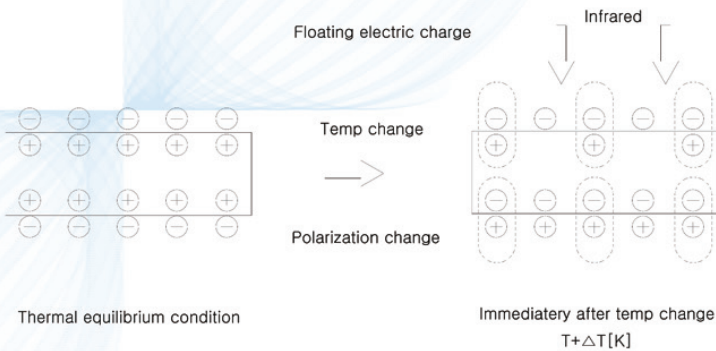
PD

FOCUS	
ANGLE	
LENGTH	
MATERIAL	HDPE
UNIT	mm
TYPE	PIR

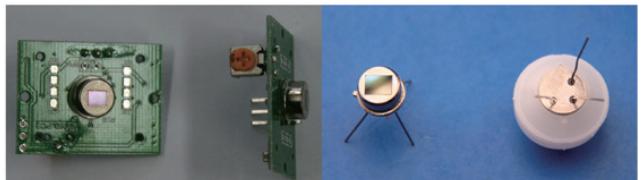


Pyroelectric Sensor (Motion Detector)

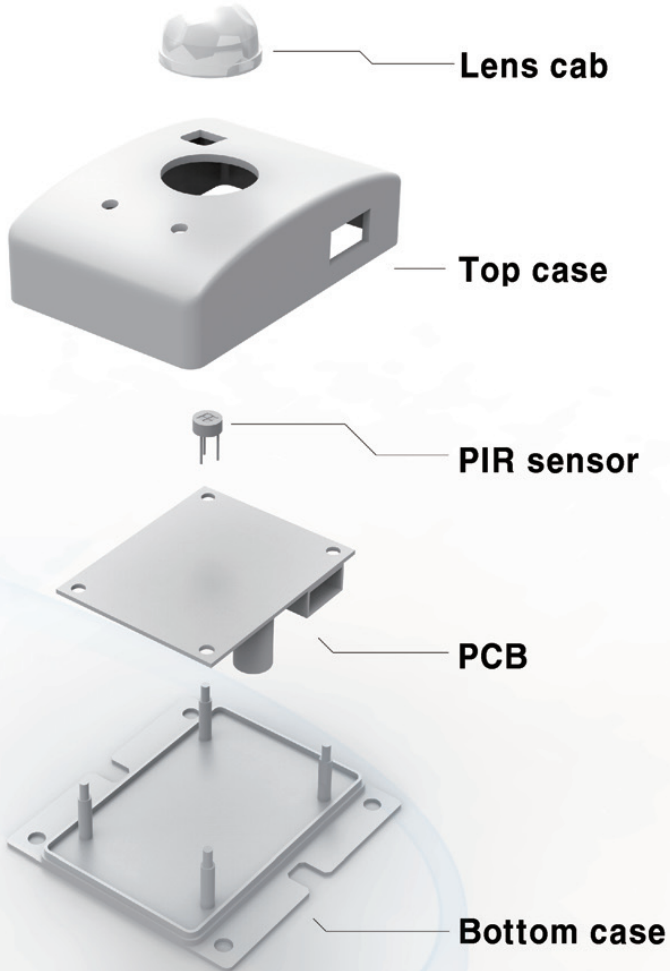
Some material's polar molecules can arrange themselves in order under specific conditions and generate spontaneous polarization. When the material undergoes temperature changes after absorbing infrared heat energy, the molecule state also changes and thereby leads to changes in the surface bound charge. This is what we call pyroelectric effect. Utilizing this effect, and matching it with different process structure and different infrared filters, the company has produced some types of pyroelectric sensors including single, double and four-element sensors that are highly sensitive and perceptive even for very weak infrared rays. As a result, the product is widely used in radiation measurement, automatic control and anti-intrusion and has brought about safety, convenience and comfort for people's work and life.



Point of Contact
Oversea sales
Myung Joong KIM
kim.diypro@gmail.com
MJKim@diypro.co.kr
+82 70-7605-1652
SOUTH KOREA



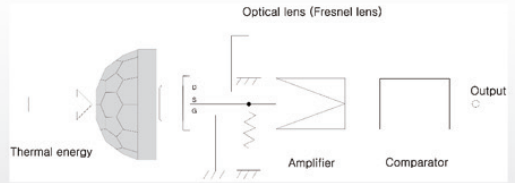
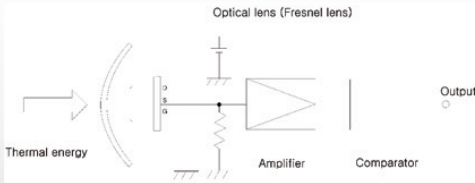
Pyroelectric Sensor



Pyroelectric Sensor

Every parts of motion sensor

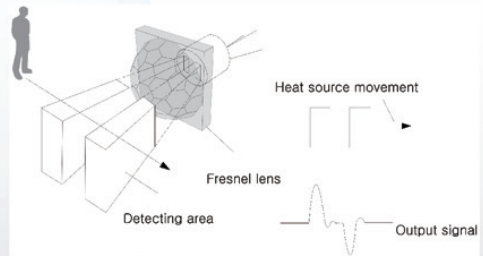
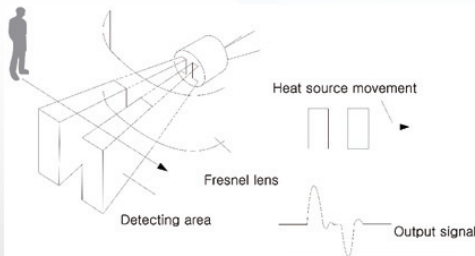
We supply parts and module of Motion detector, using pyroelectric. Motion detect sensor is consisted with PIR sensor, Fresnel lens cab, PCB and module. Fresnel lens cab is the most import part that decide detect area and distance. Customers can monitor, control and optimization to use our sensor.



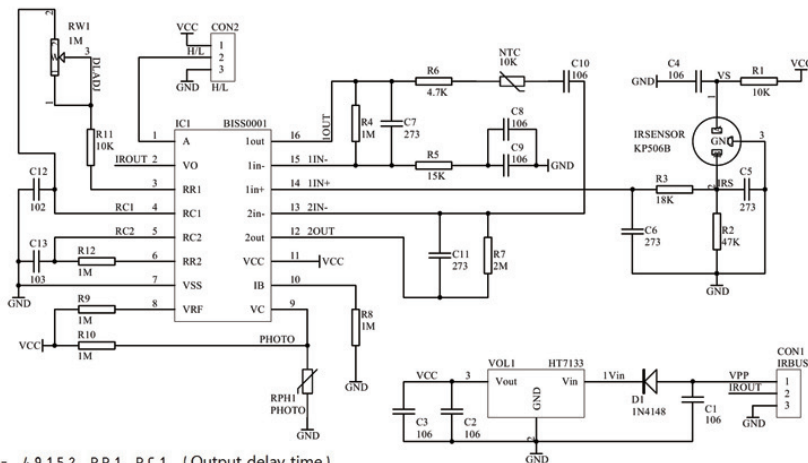
Supply PIR sensor

Dual element : RE200GE, PIR200B, LHI778, D203 and etc.
 Quad element : RE46B, SBG446-671, LHI1128 and etc.

Authorized seller of Nippon Ceramic Co. Ltd.
 Distributor of Perkin-Elmer and Senba Co. Ltd.,



Module Circuit diagram [example]



$T_x = 49152$ RR1 RC1 (Output delay time)
 $T_i = 24$ RR2 RC2 (Repeated trigger time)

Please contact us to develop Fresnel lens cab and to supply sensors.
 We have various customer in South Korea and global as well.
 Our specialty is Fresnel lens cab.

There are two way of developing.

Product from the shelf

- Quick and economic way.

Find solution more than 80 lenses that has different dimension and specs.

2. Design and mold

- Develop a product by customer needs.
- Typical delivery is 40days

