

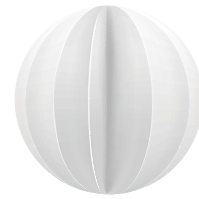
WE MAKE IT VISIBLE

Fresnel Lens | Motion Sensor | Optical Film
Optical Design | Lens for LED, Solar
First Surface Mirror

www.fresnelfactory.com
www.fresnelfactory.co.kr

Fresnel **Factory**

HISTORY



2002 ~ 2010

2011 ~ 2014

2002~
2003

Introduced various media as new concept and the first D.I.Y. projector Patented new type projector lamp using Metal-Halide lamp

2004

- 07 Introduced CEO KIM MyungJoong at Arirang TV
- 09 Developed Sayview, the first D.I.Y. concept projector and introduced Naeil newspaper
- 10 Recruited over 4million members of Diypro. net Listed D.I.Y projector contents in the the Korean best display channel

2005

- 01 Introduced Korean magazine DVD 2.0 and PCBee
- 06 Imported Front Surface Mirror from OCLI Inc. Developed and patented Wall-mounted projector

2006

- 04 Participated development of projector "Amazing" from GreenOpt
- 10 Transferred Do It Yourself Projector technology to OMAX Inc

2007

- 10 Participated development of projector "Viewcell" from GreenOpt

2008

- 01 Moved manufacturing facility to aboard
- 08 Introduced KBS(Korean Broadcasting System) News program

2010

- 01 Supplied Front surface mirror for the World first 4th generation Media Facade
- 02 Donated more than USD 12,000 for education of low-income children

2011

- 05 Participated National R&D: Development of Fresnel lens for high power LED
- 06 Opened English website: www. FresnelFactory.com

2012

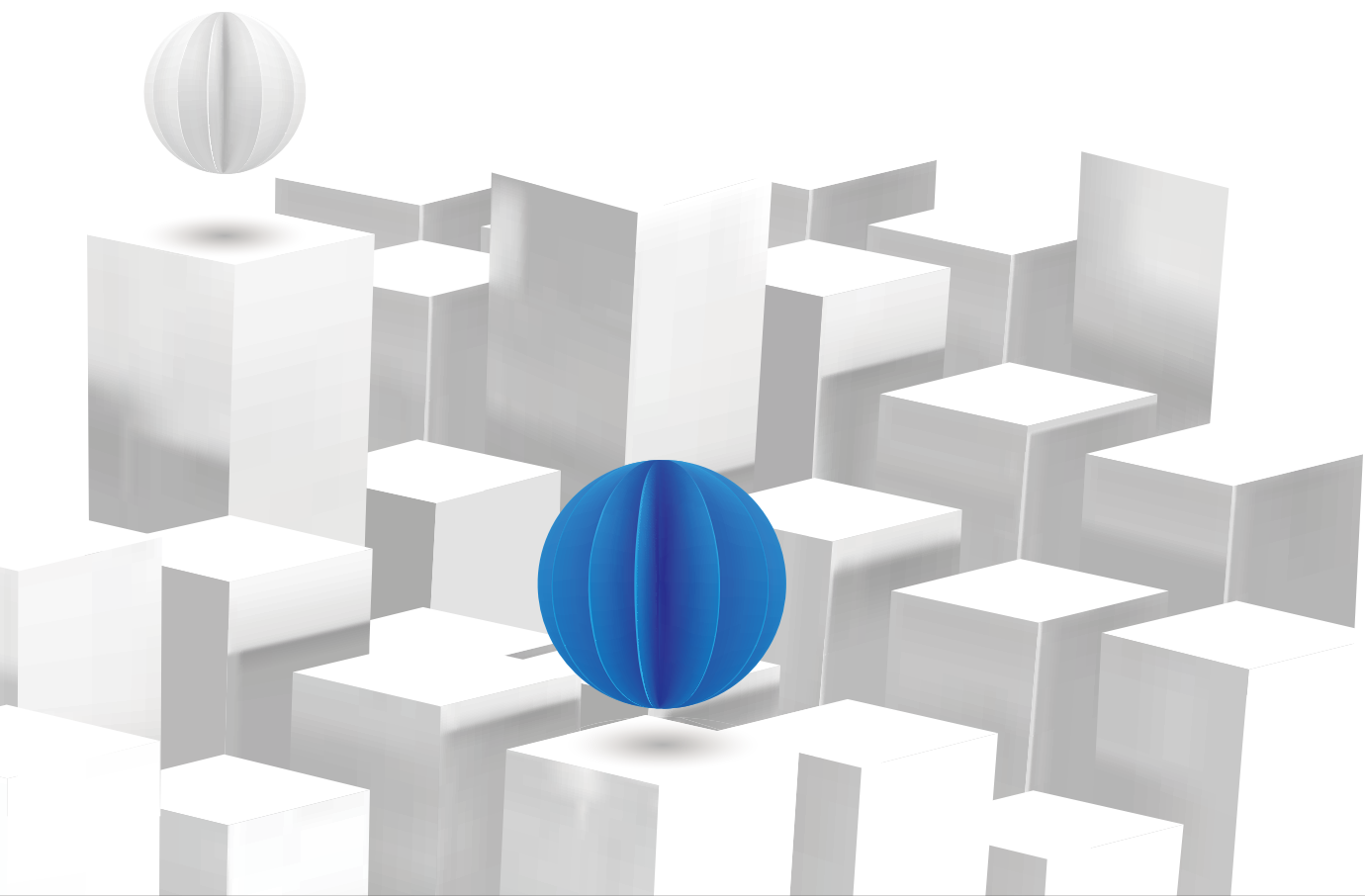
- 02 Developed Glass-free 3D Fresnel lens for LG Display
- 06 Developed lens cab for security sensor
- 09 Participated National R&D of improvement on Concentrate Photovoltaic

2013

- 02 Participated National R&D of Glass-free 3D integral photography
- Registered the establishment of incorporation of DIYPRO Co., Ltd.
- 06 Accredited Venture Certification from KOVA
- 09 Accredited Corporate R&D center from KOITA
- 12 Approved manufacture of Suwon-si

2014

- 01 Awarded R&D research achievement from Gyeonggi governor
- 03 Design and manufactured 150W Spot type LED broad casting lighting
- 07 Mass-produced motion detector for Moving walk
- 08 Developed Quad element motion-detector module
- 09 Assigned by government as the company to carry out development of products linked with overseas projects



2014 ~ 2017

2017 ~ 2020

2014 10 Signed contract with global network solution leader, LEVITON, USA

2015 02 Developed optical component and device for 50 inches glassless 3D display.

04 Developed lens for motion detecting sensor of Smart Home

10 Designed and produced Optical Floating Hologram system. 08 Start supply of PIR lens and sensor for SmartThings Motion Sensor.

09 Accredited Corporate R&D center from KOITA

12 Approved manufacture of Suwon-si

2016 01 Designed and produced lens core for Concentrating Photovoltaics(CPV)

03 Developed optical element for Optical Hologram

04 Developed Flat Type PIR Fresnel Lens that enables Pet Immune

06 Developed Simulator for Optical Hologram System

07 Appointed as the incubating company for next generation 5G Glassless 3D Hologram

10 Supplied PIR lens to Global no. 2 EMS enterprise on ODM base.

2017 03 Innobiz Certificate Acquisition

06 R&D Center Registration

07 FresnelFactory Inc. Established US branch

2017 11 Awarded commendation for vitalize small and medium business startups prize awarded by Minister of Small and Medium Venture Business

12 Appointed as the ICT promising enterprise (K-Global 300). prize awarded by the Ministry of Science and ICT(MSIT)

2018 01 Participate in CES2018

10 Selection of promising small and medium-sized enterprises in Gyeonggi-do

11 Head office relocation: 504, Yeongtong-ro 323beon-gil 38, Suwon-si, Gyeonggi-do, 16676 South Korea

12 Selected as a family-friendly company-Ministry of Gender Equality and Family

Selected as a business that is friendly to Gyeonggi family

2019 04 Change of corporate name : FresnelFactory Korea Inc.

05 Participate in VIVA Technology 2019

09 Certificate acquisition ISO9001, ISO14001

2020 02 Participate in SPIE PHOTONICS WEST 2020

COMPANY

Fresnel Factory Korea Inc. is Fresnel Lens specialized company.

Our motto is "We Make it visible"

Currently our Fresnel technology for producing is 5 different methods, such as Hot-press, Injection, Casting, Roll-to-Roll and Hot-embossing.

Each method has different advantage in terms of precision, mass-production, faster R&D time and price.

Our business model is not only supply optical components, but also optical design and mold design for different aspect of companies in global.

We have not only skillful design and tooling of Fresnel lens, but also handsful experience in VR, AR, Integral photonics, CPV, LED lights and Daylights.

We have 11 patents related with Fresnel lens and its application.

We are conducting research and development and producing in both the USA and the Korea republic.

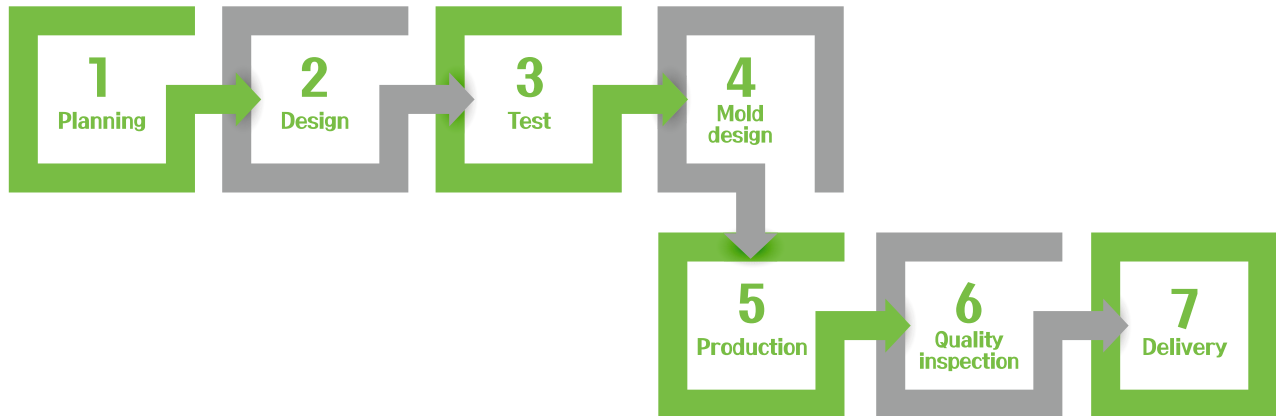


SERVICE

Step of One Stop Service

Fresnelfactory Korea Inc. provides One-Stop Service for your needs for optics.

If you concern about time and budget, we can provide you Fast-track to find out best solution from our existing products.



- 1 Planning : To find out the needs of customer and set-up constraints
- 2 Design : Optical design and simulation-based on details and constrains
- 3 Test: To check the assumption from the design stage and find out best solution from existing products
- 4 Mold design: Hot press or injection mold
- 5 Production
- 6 Quality inspection
- 7 Delivery

Parts supply(Standard Product)

We also supply various lenses from our shelf.

More than 300variations - We have various fresnel lenses that test proof of concept in a small budget and short time. Circular Fresnel, Cylindrical, Lenticular, MLA, PIR, FIR, NIR and so on

- PIR LENS CAP(Pyroelectronics, motion sensor)
- NIR AND FIR(Lenses with special materials for Far-Infrared and Near-Infrared)
- MLA LENTICULAR(Sheet and film type Micro Lens Array and 65-inch Lenticular)
- CPV AND LARGE(Photovoltaic SOG and PMMA lens array and Large Fresnel)
- CIRCLE FRESNEL(Various focus length and shape of Fresnel lenses, common purpose)
- CYLINDRICAL(Linear Fresnel with PMMA. FL from 12 to 300mm)
- LED LIGHT(Shape beam angle and condense Luminus)
- FLAT WIDE ANGLE MIRROR(Front Surface Mirror and Flat-wide angle mirror for ATM)
- OPTICAL PRISM(Various design and size of prism lenses)

CAPACITY

Our design and production capacity

The Infrared fresnel lens, be extensively apply in the switch, Annunciator, IR thermo scope, IR formation of a imagine and so on,
 can provide different induce angle, distance, size of the fresnel lens for customer.
 Nicera and Perkin-elmer sensors can supply
 Total production capacity is 200million (150 million PIR lens cab from above)

◆ Tolerance of mold

Fresnel lens Mold	
Precision	0.0005mm
Max, Mold size	1600x1200mm
Draft angle	0°
Tip & Valley radius	<0.005mm & 0.01mm

DOE & Micro lens Mold	
Precision	0.001mm~0.002mm
Max, Mold size	1600mm
Draft angle	0°

Design and tooling Machine List

- Ultra Precision CNC Machining Center
- Ultra Precision Diamond turning machine
- Low Speed Wire Cut
- High-precision Grooving Lathe for roll
- Hot press machine
- Roll-to-roll machine
- Injection machine
- Rotary table laminator
- Image measuring instrument
- Automatic Chemiluminescence Analyzer
- Solidworks for mold design
- ZEMAX optical ray-tracing
- Light tools optical ray-tracing

◆ Design and tooling Machine



◆ Mold



PRODUCT

Common Fresnel lens

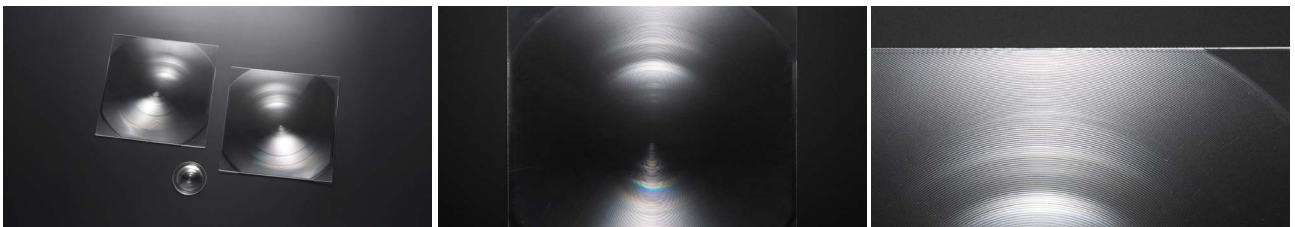
Common Fresnel lenses such as magnifiers, lighting fixtures, and 3D displays are used in a variety of fields. We can design and manufacture a variety of focus lengths, lengths and shapes of Fresnel lenses according to your needs. For example, Minus focus lens, Circle lens, Cylindrical lens, etc.

The Fresnel magnifying glass is an ultra-thin magnifying glass. Fresnel magnifying made of PMMA, PVC. The minimum thickness of PMMA is between 2 and 5MM, and the minimum thickness of PVC is between 0.45 and 0.90mm.



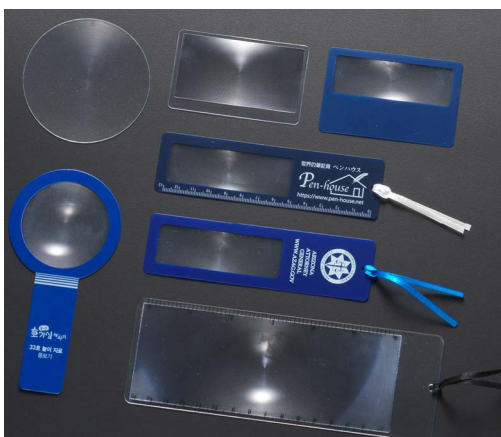
◆ FL140-130(Common Fresnel lens) Technical information

Model No.	Size H x L (mm)	Focal Length (mm)	Groove Pitch(mm)	Thickness(mm)	Material
FL140-130	Ø130	140	0.3	2	Poly visible



◆ FLM140-180(Minus focus lens) Technical information

Model No.	Size H x L (mm)	Focal Length (mm)	Groove Pitch(mm)	Thickness(mm)	Material
FLM140-180	Ø180	-140	0.3	2	Poly visible



◆ MFL90-70(Cheap card Fresnel lens) Technical information

Model No.	Size H x L (mm)	Magnification
MFL90-70	70×70	2
Thickness(mm)		Material
0.4		Poly PVC

PRODUCT

IR Series Fresnel Lens

The infrared lens features

The IR fresnel lens, be extensively apply in the clay influence the switch, Annunciator, IR thermo scope, IR formation of a imagine and so on, can provide different induce angle, distance, size of the fresnel lens for customer.

Without Fresnel lens, the sensor only can detect less than 1m distance and narrower space with lens.

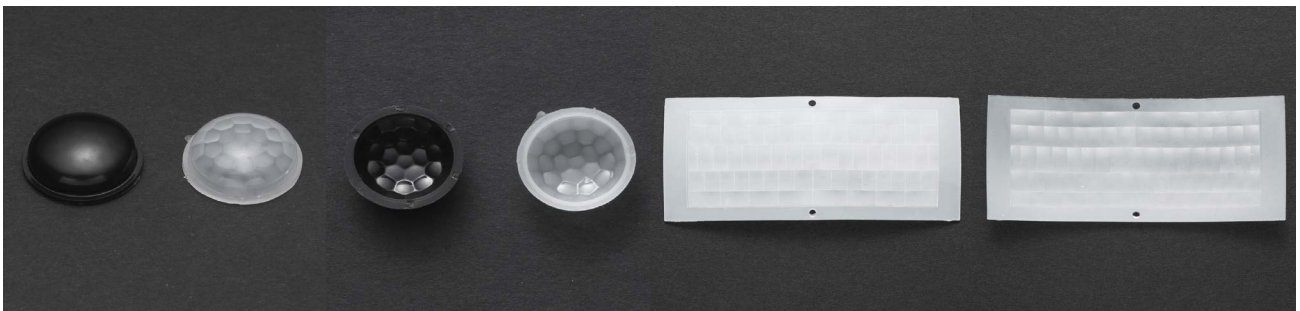
To work with Pyroelectric detector and thermopile, Fresnel lens that collects infrared rays as a sensor is required.

Fresnel Factory manufactures Fresnel lenses for passive infrared absolute temperature sensors.

Material is important to have a wide FOV and excellent Far infrared transmittance. Therefore, Fresnel Factory is using Poly FIR200 and Poly FIR25, which have a wide FOV and excel FIR transmittance

◆ PIR Fresnel lens

PIR sensor stands for Passive Infrared sensor and it is also called as Pyroelectric Sensor. PIR let the user know whether there is a movement or not by sensing the infrared light from human body relative to the background, it is being used as a motion detector sensor.



| PD06-12005(PIR) |

| PF21-12015P (PIR) |

◆ PD06-12005(PIR) Technical information

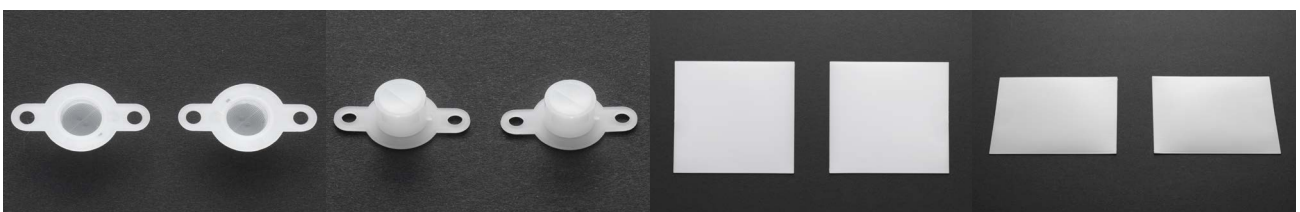
Model No.	Lens diameter(mm)	Focal Length (mm)	Detectable distance(m)	Detectable angle	Marerial
PD06-12005	Ø16	6	5	120	Poly FIR200

◆ PF21-12015P(PIR) Technical information

Model No.	Lens diameter(mm)	Focal Length (mm)	Detectable distance(m)	Detectable angle	Marerial
PF21-12015P	76×36	21	15	120	Poly FIR200

◆ FIR Fresnel lens

FIR sensor infrared light from the subject and identifies energy content and absolute temperature. Therefore, it is frequently used under high temperature where ordinary plastics can't endure.



| FIR05-04(FIR) |

| FIR00-95(FIR) |

PRODUCT

IR Series Fresnel Lens

◆ FIR05-04(FIR) Technical information

Model No.	Size H x L (mm)	Focal Length (mm)	Thickness(mm)	Material
FIR05-04	Ø8.2	5	0.6	Poly FIR25

◆ FIR00-95(FIR) Technical information

Model No.	Size H x L (mm)	Focal Length (mm)	Thickness(mm)	Material
FIR00-95	95x95	0	0.5	Poly FIR25

◆ NIR Fresnel lens

The NIR uses wavelength range of 850nm~950nm, so compared to PIR and FIR which use 8~13um wavelength range, it has different quality material and production method for Fresnel lens.



| NF05-1683B(NIR) |

| NF26-10(NIR) |

◆ NF05-1683B(NIR) Technical information

Model No.	Size H x L (mm)	Focal Length (mm)	Thickness(mm)	Material
NF05-1683B	16.8x6.3	3~9	1.95	Poly NIR212

◆ NF26-10(NIR) Technical information

Model No.	Size H x L (mm)	Focal Length (mm)	Thickness(mm)	Material
NF26-10	10	26	1.5	Poly NIR212

Fresnel factory possesses appropriate materials that suits both wavelength range and temperature mentioned above.

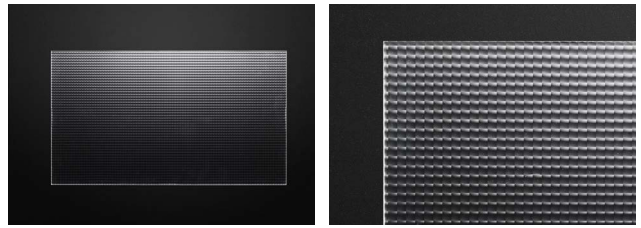
PRODUCT

MLA, Lenticular Fresnel lens

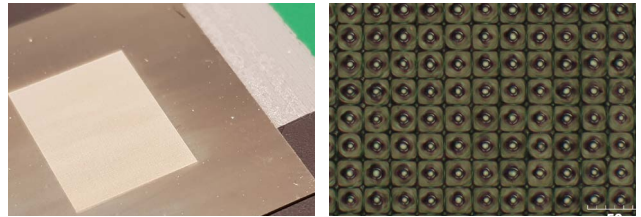
Lenticular and MLA(Micro lens array) is essentially required optics that generates 3-D image. Volume matrix is a special feature in glassless 3D image. It's a different imaging method than AR (Argument Reality) and VR (Virtual Reality) that we see often now.

The Lenticular realizes three dimensional effect on the left and right, and MLA is able to realize the effect on upper, lower, right, and left.

Through the experience of prototyping or mass production, we can design various types of optical quality, side illumination, and thickness of optics, which are the core of stereoscopic images, and we also have developed a film-type as well



| Micro Array Fresnel lens |



| Micro Array Fresnel lens Mold |

FM08-684(MLA) Technical information

Model No.	Size(mm)	Focal Length (mm)	lens array size(mm)	Thickness (mm)	Material
FM08-684	684x385.34	8.028	426x240 lens array	5	Poly visible

LT051-15(Lenticular) Technical information

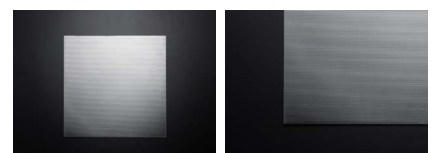
Model No.	Size H x L (mm)	Focal Length (mm)	Groove Pitch(mm)	Thickness (mm)	Material
LT051-15	800x600	2.069	0.54	1.5	Poly visible



| LT051-15(Lenticular) |

LPV60-400(Prism) Technical information

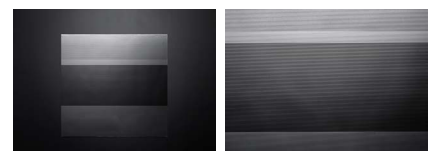
Model No.	Size H x L (mm)	Groove Pitch(mm)	Angle(°)	Thickness (mm)	Material
LPV60-400	400x400	0.6		1.5	Poly visible



| LPV60-400(Prism) |

LPD83-250(Prism) Technical information

Model No.	Size H x L (mm)	Groove Pitch(mm)	Angle(°)	Thickness (mm)	Material
LPD83-250	250x250	2.28		0.27	Poly visible



| LPD83-250(Prism) |

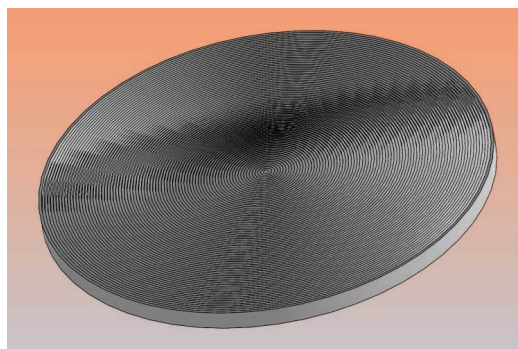
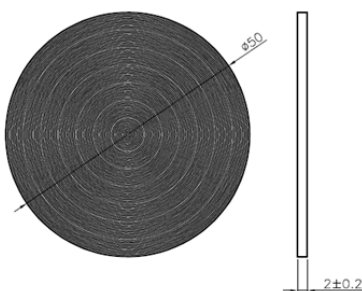
PRODUCT

VR, AR FRESNEL LENS

Fresnel lens which is developed for VR devices

This lens was designed and developed to replace the existing glass lens for reduction of weight and volume of VR devices.

VR is an environment similar to reality but not reality through human technology. The created virtual scene stimulates the user's senses to feel and experience a space that is the same as the real feeling. Users can not simply immerse themselves in virtual reality. You can also use real device operation to command them, with a feeling of being on the scene. You can observe things in three dimensions without restriction Simply put, the lens in the real VR helmet is based on different realities and local spaces to create different images. A virtual reality scene is formed in the user brain visual system.



| VR Fresnel lens |

| VR80-50(VR) |

◆ Light transmission rate(VR)



◆ VR80-50(VR) Technical information

Model No.	Size H x L (mm)	Focal Length (mm)	Groove Pitch(mm)	Thickness(mm)	Material
VR80-50	Ø50	80	0.3	2	Poly visible

PRODUCT

PMMA Condenser Fresnel lens

In the field of solar concentration, the Fresnel lens is one of the important optical components in the concentrating solar system, the solar Fresnel lens concentrator is that the focus of the lens just falls on the solar chip. when the lens face is perpendicular to the sun, the light will be focused on the cell. which will concentrate more energy, thus requiring a smaller cell area and greatly saving costs.

solar arrays uses Fresnel condenser lens with following benefits

- High precision optical components
- High precision thin thread forming process
- High refractive index
- Minimum optical losses
- High-intensity
- High transmittance and anti-aging
- Anti-ultraviolet radiation

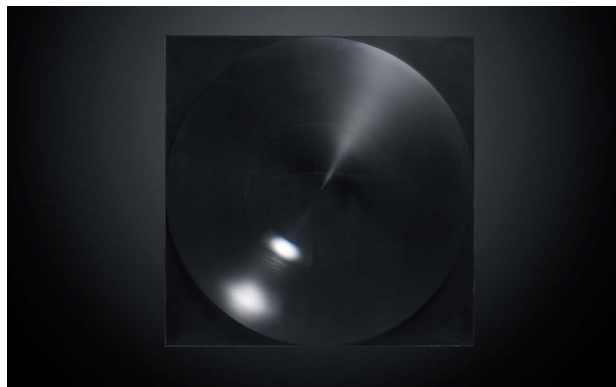
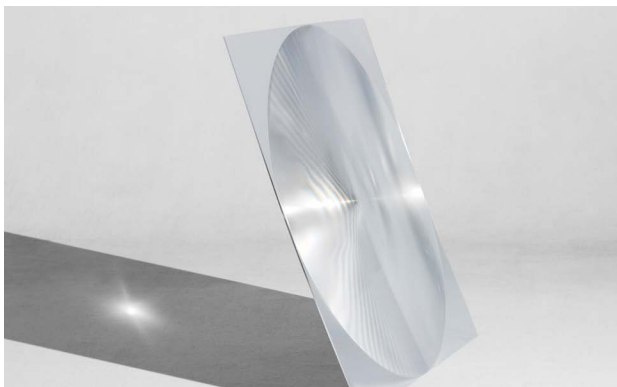
◇ PMMA Condenser Fresnel lens



| PMMA Condenser Fresnel lens |

| Installation examples - Solar system |

| Installation examples - Solar Cooking Heater |



◇ CP300-230(PMMA material) Technical information

Model No.	Size H x L (mm)	Focal Length (mm)	Groove Pitch(mm)	Thickness	Material
CP300-230	238x238	300	0.5	5	Poly visible

PRODUCT

Silicone-Glass Fresnel lens

Photovoltaic Glass-silicon on Fresnel condenser lens(SOG) and solar panels generally use the box design approach that we can achieve the best results. Solar arrays using Fresnel condenser lens can achieve long term exposure by high precision optical components, suitable for outdoor air in the work environment. With silicone gel mold attached onto the ultra-white toughened glass surface of Fresnel lens, users will achieve high-precision thin thread forming process, resulting following benefits.

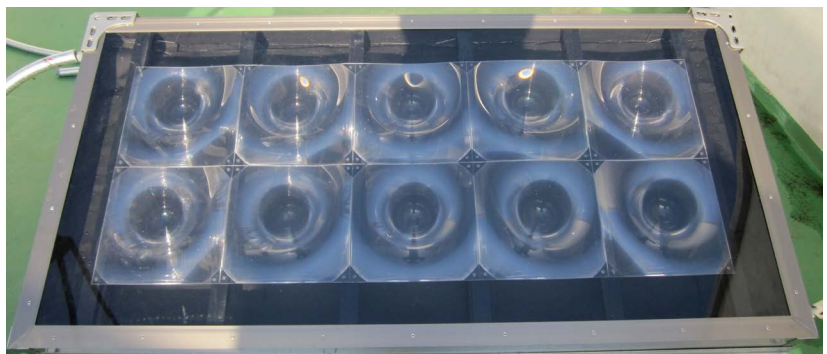
- ensured high refractive index
- minimize optical losses
- high-intensity/transmittance and
- anti-aging/anti-ultraviolet radiation

Comparably, SOG(Silicon on Glass) has several times better climate resistance characteristics than PMMA (Optical Acrylic), as it can take greater heat temperature (180°C vs. 60°C) without deformation of lens pattern. Based on customer's requirement on solar panel, Fresnel factory provides various customizations, such as modification on size of lens, incidence angle, distance between lens and solar panels, etc.

◆ Silicone-Glass Condenser Fresnel lens



| Silicone-Glass Condenser Fresnel lens |



| Installation examples Solar water boiler |



| Silicone-Glass Condenser Fresnel lens |



| Installation examples Urban plant factory |

◆ CG1300-1010(Silicone-Glass material) Technical information

Model No.	Size H x L (mm)	Focal Length (mm)	Groove Pitch(mm)	Thickness	Material
CG1300-1010	1010x1010 (per 244x244mm)	1300		4	Glass+Poly visible

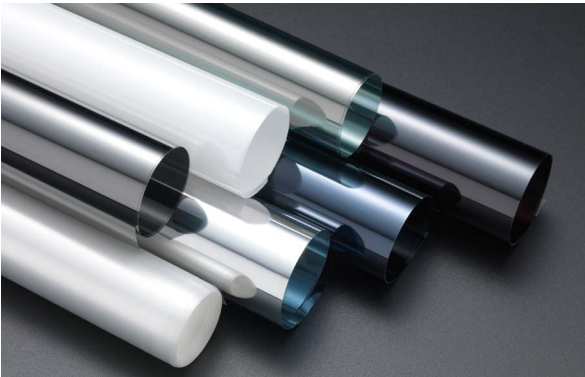
PRODUCT

Optical film

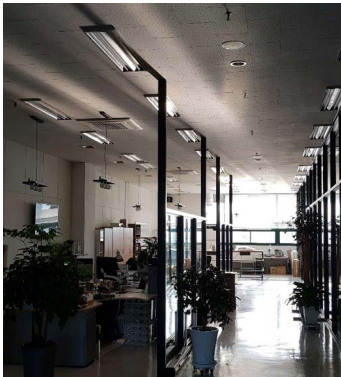


Solis window film is a sun control optical film brand name of Fresnel Factory Inc. Solis Daylight film developed on the basis of Fresnel technology held by Fresnel Factory Inc. The film is a kind of neo-concept film, not blocking the sunlight coming into the window, but redirecting the sunlight. Based on automated production and quality enhancement, we have had our dream, "Low production cost and high-quality stability" realized. Window tinting films manufactured, based upon technologies of optical lens production, display one step higher coating's quality and quality stability(Low Lot tolerance).

Optical Film

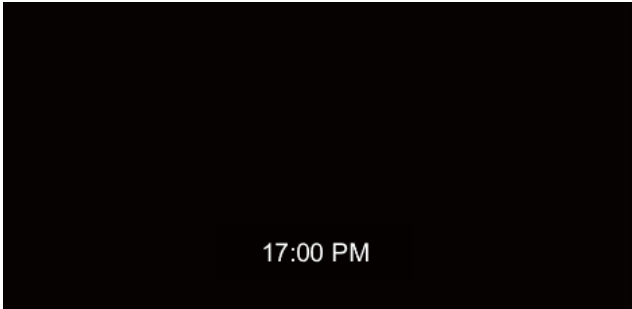
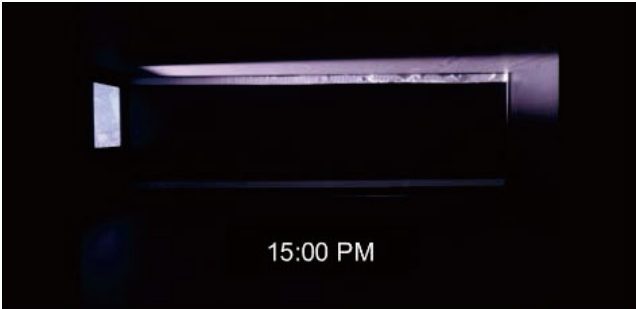
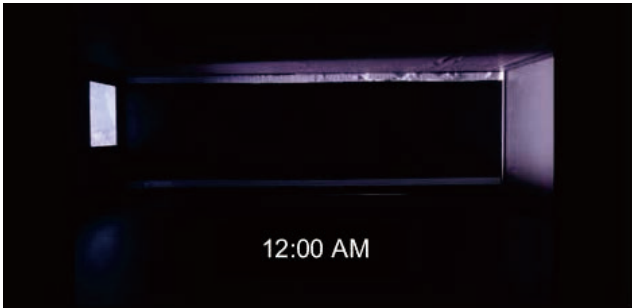
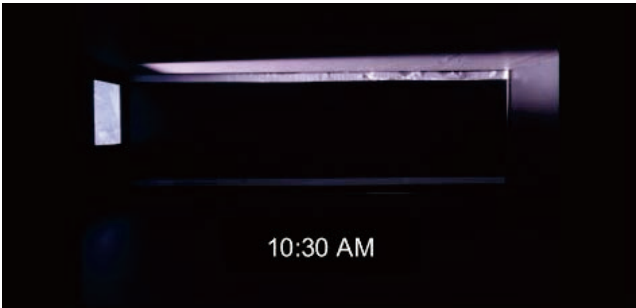


| Optical Film |



| Solis applied example |

Redirected Sunlight of indoor by Solis



PRODUCT

Optical film



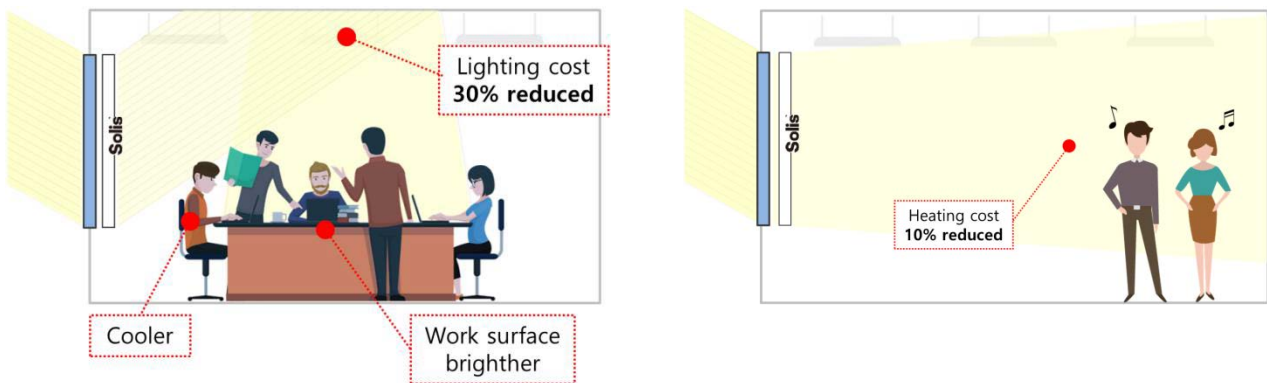
Solis™ Sun Control Window Film (SL3402, Specialized for Northern Europe)

- Up to 20% brighter inside space
- Up to 30% saving of lighting cost
- 250% wider sunny surface
- Non-metalized film with no signal interference
- Up to 90% infrared rejection providing
- 99% of UV-ray blocking, 5 Years warranty

◆ SL3402 Technical information

Model No.	Width(mm)	Length(mm)	Thickness(um)	Material	etc.
SL3402	1050	1000	195um	PET	

◆ Solis is the new way to control natural light.



Solis Natural Light Film can redirect sunlight to the ceiling and deep inside the room. It makes your workspace brighter by 20% than before without any lightings assistance. So, you can save the lighting cost up to 30% than before.

PRODUCT

Flat Wide-angle mirror

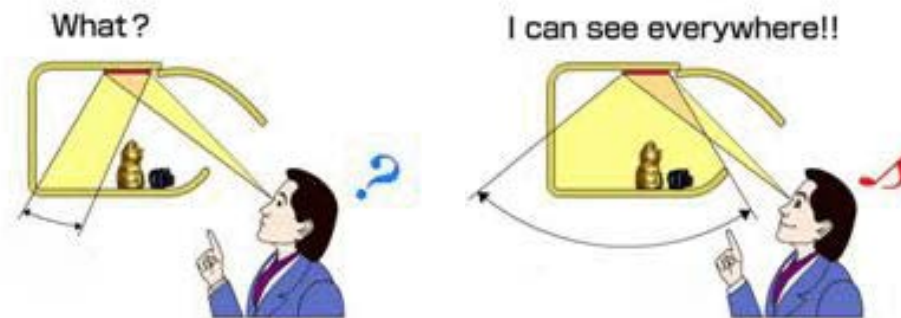
Reflective Fresnel wide-angle mirror can serve following purposes: Banks ATM, bank window for security and other fields. It is designed with light weight, compact size, broad visualization in scope, and high durability to cope with external impacts.

Applications

- Extending throwing distance of Beam Projector
- Rear projection system
- D.I.Y. projector
- Photo mirror
- Digital copiers
- Scanners
- Automotive digital dashes

Reversing The Wide-Angle Mirror

- Enhanced aluminum coating
- Superior durability for long product life
- High reflector (HR) coating produces reflectivity of 94% or 97%
- Protective tape on coated surface (tape type and tack strength options)



◆ Wide angle Mirror



◆ RP390-283



PRODUCT

Flat Wide-angle mirror

◆ Installation examples



◆ Installation examples ATM mirror



◆ RP390-283(Reflecting Wide-Angle Lens) Technical information

Model No.	Size H x L (mm)	Focal Length (mm)	Groove Pitch(mm)	Thickness	Material.
RP390-283	283x283	390	0.4	2	Poly visible

◆ 8200QT(Reversing The Wide-Angle Mirror) Technical information

Model No.	Size H x L (mm)	Focal Length (mm)	Groove Pitch(mm)	Thickness	Material.
8200QT	96x42	350	0.3	2	Poly visible

PRODUCT

LED Fresnel lens

Fresnel factory has a lot of optical solution for LED lighting like High-Bay, stage lighting, down lights, lenses for package etc. Fresnel lens is lighter and thinner than convex (concave) lens. So, you can use Fresnel lens to make lighter and smaller LED light fixture devices.

The Principles of Fresnel Factory's LED lampshade are as follows

01

With the large reflection angle of the LED point lamp-house, the emanative ray spreads the heat and compares severely, making use of the Fresnel lens to gather the light function. The rays will be gathered by using valid scope therefore increase light effect and maximize brightness result.

02

The Fresnel lens is differentiated from traditional LED lamp, in terms of the design of focal length and distance, which establishes the effective emergent light angle.

03

Compared to traditional products, the super thin structure of Fresnel lens enables improved light transmissibility. In addition, it could be applied for various purposes with its small and condensed product design. We can design and manufacture according to your needs.

LED Light Fresnel lens



LS35-05 Technical information

Model No.	Size H x L (mm)	Focal Length(mm)	Groove Pitch(mm)	Material
LS35-05	Ø52	35	0.5	Poly visible



| Interior LED light with LS35-05 |

| Condense light to apply LED Fresnel lens |

STANDARD PRODUCT LIST

◆ Common Fresnel Lens

- Common Fresnel Lens

No.	Model No.	Size H x L (mm)	Focal Length (mm)	Groove Pitch(mm)	Thickness(mm)	Material
1	FL06-12	Ø12	6	0.4	2	Poly visible
2	FL12-24	Ø24	12	0.3	2	Poly visible
3	FL16-30	Ø30	16	0.5	2	Poly visible
4	FL28-45	Ø45	28	0.3	2	Poly visible
5	FL35-115	115x140	35	0.3	2	Poly visible
6	FL40-100	Ø100	40	0.3	2	Poly visible
7	FL50-100	Ø100	50	0.3	2	Poly visible
8	FL55-120	Ø120	55	0.3	2	Poly visible
9	FL63-90	Ø90	63	0.3	2	Poly visible
10	FL63-110	Ø110	63	0.3	2	Poly visible
11	FL70-100	Ø100	70	0.3	2	Poly visible
12	FL74-210	Ø210	74	0.3	2	Poly visible
13	FL80-160	Ø160	83	0.5	2	Poly visible
14	FL90-114	114x80	90	0.3	2	Poly visible
15	FL90-150	Ø150	90	0.5	2	Poly visible
16	FL100-180	Ø180	100	0.3	2	Poly visible
17	FL100-200	200x170	100	0.3	2	Poly visible
18	FL100-230	230x230	100	0.5	2	Poly visible
19	FL120-200	Ø200	120	0.3	2	Poly visible
20	FL120-210	Ø210	120	0.5	2	Poly visible
21	FL130-140	140x100	130	0.3	2	Poly visible
22	FL135-120	120x100	135	0.3	2	Poly visible
23	FL135-230	Ø230	135	0.5	2	Poly visible
24	FL140-130	Ø130	140	0.3	2	Poly visible
25	FL140-150	Ø150	140	0.3	2	Poly visible
26	FL140-250	Ø250	140	0.5	2	Poly visible
27	FL148-120	120x90	148	0.3	2	Poly visible
28	FL156-240	Ø240	156	0.3	2	Poly visible
29	FL160-130	Ø130	160	0.3	2	Poly visible
30	FL170-220	Ø220	170	0.3	2	Poly visible
31	FL170-240	240x180	170	0.3	2	Poly visible
32	FL170-140	140x100	170	0.3	2	Poly visible
33	FL185-230	Ø230	185	0.3	2	Poly visible
34	FL185-240	Ø240	185	0.5	2	Poly visible
35	FL200-100	Ø100	200	0.1	2	Poly visible
36	FL200-285	Ø285	200	0.5	2	Poly visible
37	FL210-160	Ø160	210	0.3	2	Poly visible
38	FL210-230	230x230	210	0.5	2	Poly visible
39	FL220-220	220x170	220	0.5	2	Poly visible
40	FL220-300	Ø300	220	0.3	2	Poly visible
41	FL235-300	Ø300	235	0.5	2	Poly visible
42	FL250-240	Ø240	250	0.5	2	Poly visible
43	FL260-160	Ø160	260	0.3	2	Poly visible
44	FL310-230	230x170	310	0.3	2	Poly visible
45	FL326-180	Ø180	326	0.3	2	Poly visible
46	FL330-395	395x395	330	0.5	2	Poly visible
47	FL370-230	Ø230	370	0.5	2	Poly visible
48	FL400-300	Ø300	400	0.3	2	Poly visible
49	FL457-260	260x210	457	0.2	2	Poly visible
50	FL500-510	510x300	500	0.125	2	Poly visible
51	FL510-375	375x260	510	0.5	2	Poly visible
52	FL600-300	300x300	600	0.5	2	Poly visible
53	FL600-320	Ø320	600	0.5	2	Poly visible
54	FL630-431	431x401	630	0.5	2	Poly visible
55	FL700-780	780x780	700	0.2	2	Poly visible
56	FL900-300	Ø300	900	0.3	2	Poly visible
57	FL1000-256	Ø256	1000	0.5	2	Poly visible
58	FL2000-300	Ø300	2000	0.3	2	Poly visible

STANDARD PRODUCT LIST

◆ Common Fresnel Lens

- Minus Focus Fresnel Lens

No.	Model No.	Size H x L (mm)	Focal Length (mm)	Groove Pitch(mm)	Thickness(mm)	Material
1	FLM300-240	240x240	-300	0.5	2	Poly visible
2	FLM220-300	300x300	-220	0.5	2	Poly visible
3	FLM170-180	∅180	-170	0.3	2	Poly visible
4	FLM330-300	300x300	-330	0.5	2	Poly visible
5	FLM140-180	∅180	-140	0.3	2	Poly visible
6	FLM05-150	150x100	-5	0.5	2	Poly visible

◆ Cylindrical Fresnel lens

- Linear Fresnel Lens

No.	Model No.	Size H x L (mm)	Focal Length (mm)	Groove Pitch(mm)	Thickness(mm)	Material
1	FLL12-30	30x800	12	0.3	2	Poly visible
2	FLL15-40	40x800	15	0.5	2	Poly visible
3	FLL18-50	50x800	18	0.5	2	Poly visible
4	FLL25-65	65x800	25	0.5	2	Poly visible
5	FLL30-80	80x800	30	0.5	2	Poly visible
6	FLL40-110	110x800	40	0.5	2	Poly visible
7	FLL50-30	30x800	50	0.5	2	Poly visible
8	FLL60-150	150x800	60	0.5	2	Poly visible
9	FLL70-200	200x800	70	0.5	2	Poly visible
10	FLL80-200	200x800	80	0.5	2	Poly visible
11	FLL90-200	200x800	90	0.5	2	Poly visible
12	FLL100-200	200x800	100	0.5	2	Poly visible
13	FLL150-50	50x800	150	0.5	2	Poly visible

◆ MLA,Lenticular Fresnel lens

- Array Fresnel Lens

No.	Model No.	Size H x L (mm)	Focal Length (mm)	lens array size(mm)	Thickness(mm)	Material
1	FM08-684	684x385.34	8.028	426x240 lens array	5	Poly visible
2	FM29-679	679.77x380.97	29.88	91x51 lens array	5	Poly visible
3	LS200MK	482x298		11.6x10.8	5	Poly visible
4	FML32-3030	30x30	0.0321	0.023	0.3	
5	FML15-1008	10.68x8.28		0.012x0.012	0.3	

- Lenticular Fresnel lens

No.	Model No.	Size H x L (mm)	Focal Length (mm)	Groove Pitch(mm)	Thickness(mm)	Material
1	LT051-15	800x600	2.069	0.54	1.5	Poly visible
2	LT147-186	1452x832		1.47	1.86	Poly visible
3	LT127-039	1500x---		1.27	0.39	
4	LT127-034	1500x---		1.27	0.34	
5	LT635-027	1500x---		0.635	0.27	

- VR Fresnel lens

No.	Model No.	Size H x L (mm)	Focal Length (mm)	Groove Pitch(mm)	Thickness(mm)	Material
1	VR80-50	∅50	80	0.3	2	Poly visible
2	VR90-70	70x70	90	0.3	2	Poly visible

- Prism Fresnel lens

No.	Model No.	Size H x L (mm)	Groove Pitch(mm)	Angle(°)	Thickness(mm)	Material
1	LPV60-400	400x400	0.6		1.5	Poly visible
2	LPV60-300	300x300	0.6		1.86	Poly visible
3	LPD105-300	300x300	400/38.4		0.39	Poly visible
4	LPD67-226	226x150	0...8/0.201		0.34	Poly visible
5	LPD83-250	250x250	2.28		0.27	Poly visible
6	LPV9050F				0.27	Poly visible

STANDARD PRODUCT LIST

◆ CPV and Large Fresnel lens

- Large Fresnel Lens

No.	Model No.	Size H x L (mm)	Focal Length (mm)	Groove Pitch(mm)	Thickness(mm)	Material
1	CP1300-1100	1100x1100	1300	0.5	5	Poly visible
2	LF890-813	812.8x812.8	890	0.5	5	Poly visible
3	LF1000-1100	1100x1100	1000	0.5	5	Poly visible
4	LF700-780	780x780	700	0.2	5	Poly visible

- Condenser Fresnel Lens(PMMA material)

No.	Model No.	Size H x L (mm)	Focal Length (mm)	Groove Pitch(mm)	Thickness(mm)	Material
1	CP300-230	238x238	300	0.5	5	Poly visible
2	CP330-280	280x280	330	0.5	5	Poly visible
3	CP220-280	280x280	220	0.5	5	Poly visible
4	CP250-270	270x250	250	1	5	Poly visible
5	CP182-235	235x235	182	0.5	5	Poly visible
6	CP350-300	310x310	350	1	5	Poly visible
7	CP350-330C	340x340	350	1	5	Poly visible
8	CP265-25249	268x249	265	1	5	Poly visible
9	CP265-250	∅240	265	0.5	5	Poly visible
10	CP406-260	∅250	406	0.5	5	Poly visible
11	CP450-230	∅200	450	0.5	5	Poly visible

- Condenser Fresnel Lens(Silicone-Glass materials)

No.	Model No.	Size H x L (mm)	Focal Length (mm)	Groove Pitch(mm)	Thickness(mm)	Material
1	CG1300-1010	"1010x1010 (per 244x244mm)"	1300		4	Glass+Poly visible
2	CG93.5-830	"830x630 (per 50x50mm)"	93.5		4	Glass+Poly visible

◆ Flat wide angle mirror

- Reflecting Wide-Angle Lens

No.	Model No.	Size H x L (mm)	Focal Length (mm)	Groove Pitch(mm)	Thickness(mm)	Material
1	RN350-40	60x40	350	0.3	2	Poly visible
2	RN350-44	44x29	350	0.35	2	Poly visible
3	RN280-38	117.8x37.8	280	0.3	2	Poly visible
4	RN350-54	54x35	350	0.35	2	Poly visible
5	RN350-53	84.5x53.6	350	0.3	2	Poly visible
6	RN350-30	64.5x29.5	350	0.35	2	Poly visible
7	RN350-47	74x47	350	0.3	2	Poly visible
8	RN350-B47	74x47 , ∅30	350	0.35	2	Poly visible
9	RT350-49	65.3x49.5	350	0.3	2	Poly visible
10	RT350-R49	65.3x49.5	350	0.3	2	Poly visible
11	RP390-283	283x283	390	0.4	2	Poly visible
12	RN145-298	298x298	145	0.5	2	Poly visible
13	RP375-292	292x292	375	0.4	2	Poly visible
14	RN145-280	280x280	145	0.4	2	Poly visible

- Reversing The Wide-Angle Mirror

No.	Model No.	Size H x L (mm)	Focal Length (mm)	Groove Pitch(mm)	Thickness(mm)	Material
1	PR350-199	252x199	350	0.3	2	Poly visible
2	8200QT	96x42	350	0.3	2	Poly visible
3	8200QT-half	96x32	350	0.3	2	Poly visible
4	PR150-45	150x45	750		2	Poly visible
5	PR200-45	200x45	750		2	Poly visible

STANDARD PRODUCT LIST

LED Light

No.	Model No.	Size H x L (mm)	Focal Length (mm)	Groove Pitch(mm)	etc.	Material
1	LS18-03	Ø38	18	0.3		Poly visible
2	LM20-01B	Ø162	20	0.1	Ø30, 21 array	Poly visible
3	LM20-01M	Ø162	20	0.1	Ø30, 11 array	Poly visible
4	LM20-01S	Ø162	20	0.1	Ø30, 7 array	Poly visible
5	LM20-01V	Ø210	20	0.1	"Ø42, 7 array Ø35, 6 array Ø45, 6 array"	Poly visible
6	LS21-03	Ø38	21	0.3		Poly visible
7	LM24-026	Ø62	24	0.26		Poly visible
8	LM24-03	152.3x152.3	24	0.3	Ø52, 6 array	Poly visible
9	LS2605-02	Ø44.8	26.5	0.2		Poly visible
10	LS2705-05	Ø51	27.5	0.5		Poly visible
11	LS35-05	Ø52	35	0.5		Poly visible
12	LS35-05D	Ø80	35	0.5		Poly visible
13	LM35-05	44x42	35	0.5		Poly visible
14	LM35-05B	100.5x51.5	35	0.5	Ø50, 2 array	Poly visible
15	LS52-04	26.5x19.5	52	0.4		Poly visible
16	LM6704-025		67.4/134.8	0.25		Poly visible
17	LM83-025	Ø268.5	83/125	0.25		Poly visible
18	LS90-125	(64+125)x90	90	0.5		Poly visible
19	LS90-155	(58+155)x100	90	0.5		Poly visible
20	LS120-75	75.5x75.5	120	0.3		Poly visible
21	LS120-138	138x120	120	0.3		Poly visible
22	LS120-170	Ø170	120	0.3		Poly visible
23	LS120-200	Ø200	120	0.3		Poly visible
24	LS130-147	Ø147	130	0.3		Poly visible
25	LS135-88	Ø88	135	0.3		Poly visible
26	LS135-155	(59+155)x100	135	0.3		Poly visible
27	LS140-88	(22+88)x72	140	0.5		Poly visible
28	LS140-198	Ø198	140	0.5		Poly visible
29	LS140-165	Ø165	140	0.3		Poly visible
30	LS140-200	Ø200	140	0.3		Poly visible
31	LS150-035	Ø298	150	0.35		Poly visible
32	LS150-035S	84.2x57	150	0.35		Poly visible
33	LS170-198	Ø198	170	0.3		Poly visible
34	LS185-198	Ø198	185	0.3		Poly visible
35	LS185-200	Ø200	185	0.3		Poly visible
36	LM185-155	155x85	185	0.3	85x77.5 , 2 array	Poly visible
37	LS200-205	Ø205	200	0.5		Poly visible
38	LS200-115	115x115 , Ø150	200	0.3		Poly visible
39	LS200-260	Ø260	200	0.5		Poly visible
40	LS210-196	Ø196	210	0.5		Poly visible
41	LS210-252	252x137	210	0.5		Poly visible
42	LS220-196	Ø196	220	0.3		Poly visible
43	LS220-197	Ø197.5	220	0.3		Poly visible
44	LS230-150	Ø150	230	0.5		Poly visible
45	LS230-180	Ø180	230	0.5		Poly visible
46	LS235-205	Ø205	235	0.5		Poly visible
47	LS235-250	Ø250	235	0.5		Poly visible
48	LS235-260	Ø260	235	0.5		Poly visible
49	LS240-180	Ø180	240	0.5		Poly visible
50	LS326-250	Ø250	326	0.5		Poly visible
51	LS406-240	Ø240	406	0.5		Poly visible
52	LS600-310	Ø310	600	0.5		Poly visible
53	LM12-266	Ø266	12		Ø12,288 array	Poly visible

STANDARD PRODUCT LIST

◆ PIR Lens Cab

No.	Model No.	Lens diameter(mm)	Focal Length (mm)	Detectable distance(m)	Detectable angle	Material
1	PD55-14006	Ø13.6	5.5	6	140	Poly FIR200
2	PD60-12008	Ø12.7	6	8	120	Poly FIR200
3	PD105-10010S	23.4x23.4	10.5	10	100	Poly FIR200
4	PF08-10B	Ø12	8	10	30	Poly FIR200
5	PF20-10WS	Ø20	20	10	120	Poly FIR200
6	PF28-10W	Ø20	28	10	60	Poly FIR200
7	PF36-10W	Ø20	36	10	60	Poly FIR200
8	PF20-10W	Ø22.3	20	10	60	Poly FIR200
9	PD15-14006	Ø28	15	6	140	Poly FIR200
10	PD15-36007	Ø49	15	7	360	Poly FIR200
11	PD105-10010	Ø23.4	10.5	10	100	Poly FIR200
12	PF30-12012C	43.2x19.7	30	12	120	Poly FIR200
13	PF30-12012S	46x20	30	12	120	Poly FIR200
14	PF20-06015	Ø35	20	15	60	Poly FIR200
15	PF297-79810	58x45	29.7	10	79.8	Poly FIR200
16	PF30-12012P	59.5x39	30	12	120	Poly FIR200
17	PF30-12012	59.5x39	30	12	120	Poly FIR200
18	PF31-12012	52x60	31	12	120	Poly FIR200
19	PD06-12005	Ø16	6	5	120	Poly FIR200
20	PF03-3025	Ø17	19	16	30	Poly FIR200
21	PD75-12005		7.5	5	120	Poly FIR200
22	PD75-12005A	Ø21.71	7.5	5	120	Poly FIR200
23	PD75-12005B	Ø19.77	7.5	5	120	Poly FIR200
24	PD75-12005C	Ø19	7.5	5	120	Poly FIR200
25	PD06-12002B	Ø13.34	6	2	120	Poly FIR200
26	PD12-12010	24x24	12	10	120	Poly FIR200
27	PF20-10	Ø22	20	10	60	Poly FIR200
28	PD15-36010P	Ø41.5	15	10	360	Poly FIR200
29	PD15-36010	Ø43	15	10	360	Poly FIR200
30	PD05-12005	Ø11.8	5	5	120	Poly FIR200
31	PD09-12008	Ø17.8	9	8	120	Poly FIR200
32	PF28	Ø19.05	28.7	10	60	Poly FIR200
33	PD116-12010	Ø23.3	11.65	10	120	Poly FIR200
34	PF305-9012	60.7x42.4	30.5	12	90	Poly FIR200
35	PF23-11012	56.7x35.7	23	12	110	Poly FIR200
36	PF305-8324	61x42.7	30.5	24	83	Poly FIR200
37	PF22-10010	57x36	22	10	100	Poly FIR200
38	PF20-8907	39x25	20	7	89	Poly FIR200
39	PD30-0000		30			Poly FIR200
40	PD175-36005	Ø45	17.5	5	360	Poly FIR200
41	PD15-36005A	Ø44.5	15	5	360	Poly FIR200
42	PD105-10005	Ø22.7	10.5	5	100	Poly FIR200
43	PD12-11612	Ø23.5	12	12	116	Poly FIR200
44	PD50-12008	Ø100	50	8	120	Poly FIR200
45	PD15-12010	Ø35.7	15	10	120	Poly FIR200
46	PF297-79810R	56.8x44.6	29.7	10	79.8	Poly FIR200
47	PD105-10010F	23.3x23.3	10.5	10	100	Poly FIR200
48	PF25-12012	92.3x40	25	12	120	Poly FIR200
49	PF25-9010	53.5x34	25	10	90	Poly FIR200
50	PD06-12008	Ø14	6	8	120	Poly FIR200
51	PF16-12012	62x25	16	12	120	Poly FIR200
52	PD05-9005	Ø17	5	5	90	Poly FIR200
53	PF23-6020	39x25	23	20	60	Poly FIR200
54	PD11-12010	Ø23	11	10	120	Poly FIR200
55	PD15-36005B	Ø44.5	15	5	360	Poly FIR200
56	PD96-8010	Ø12.5	9.6	10	80	Poly FIR200
57	PF20-3027		20	27	30	Poly FIR200
58	PD23-6020	35x25	23	20	60	Poly FIR200
59	PF21-12015P	76x36	21	15	120	Poly FIR200

STANDARD PRODUCT LIST

◆ PIR Lens Cab

No.	Model No.	Lens diameter(mm)	Focal Length (mm)	Detectable distance(m)	Detectable angle	Material
60	PD25-10007	34.9x20	25	7	100	Poly FIR200
61	PD12-11607	Ø23.9	12	7	116	Poly FIR200
62	PD115-12010	Ø26	11.5	10	120	Poly FIR200
63	PD06-6005	Ø11.5	6	5	60	Poly FIR200
64	PD076-9005	Ø20.7	7.6	5	90	Poly FIR200
65	PD03-12005	Ø9.5	3	5	120	Poly FIR200
66	PD04-6005	Ø10.1	8	3	60	Poly FIR200
67	PD04-7004	18.7x18.7	4	5	70	Poly FIR200
68	PD08-6003B	26x10	8	3	60	Poly FIR200
69	FD08-10005	23x23	8	5	100	Poly FIR200
70	FD08-110AP	30.8x17.9	8	12	110	Poly FIR200
71	PD09-12008_wall mount	Ø17.8	9	8	120	Poly FIR200
72	PD50-12008	Ø100	50	8	120	Poly FIR200
73	PD_1	64.8x59.7				Poly FIR200
74	PD30-36010	Ø76.58	30	10	360	Poly FIR200
75	PD115-12010_HAT	Ø26	11.5	10	120	Poly FIR200
76	PF63-10	Ø10	63	2	26	Poly FIR200

- Sensor

No.	Model No.	Size H x L (mm)	Element size	Field of View(°)	Pins	etc.
1	BS412	Ø9.1	2x1, 2 elements	65	3	
2	RE200GE	Ø9.2	3x1, 2 elements	X: 138; Y: 125	3	
3	SBG446-671	Ø9.2	1.0x1.0, 4elements	132	3	
4	LHI878	Ø9.2	2x1, 2 elements	95	3	

◆ Cheap card Fresnel lens

No.	Model No.	Size H x L (mm)	Magnification	Thickness(mm)	Material	etc.
1	MFL90-70	70x70	2	0.4	Poly PVC	
2	MFL13-95	80x51	2	0.4	Poly PVC	
3	MFL90-70	95x135	2	0.4	Poly PVC	
4	MFL900-80	Ø80	2	0.4	Poly PVC	

◆ NIR,FIR Fresnel lens

No.	Model No.	Size H x L (mm)	Focal Length (mm)	Transmittance rate	Thickness(mm)	Material
1	FIR05-01	Ø8.2	5		0.6	Poly FIR25
2	FIR00-02	Ø10.2	0	41.96%	0.6	Poly FIR25
3	FIR00-03	Ø10.2	0	32.70%	0.6	Poly FIR25
4	FIR05-04	Ø8.2	5		0.6	Poly FIR25
5	FIR00-95	95x95	0		0.5	Poly FIR25
6	NF26-25	Ø25	26		1.5	Poly NIR212
7	NF26-10	Ø10	26		1.5	Poly NIR212

◆ Optical Film

- Solis film

No.	Model No.	Width(mm)	Length(mm)	Thickness(um)	Material	etc.
1	SL5034	1050	1000	195um	PET	
2	SL3402	1050	1000	195um	PET	
3	SL4060	1050	1000	195um	PET	
4	SL4660	1050	1000	195um	PET	

STANDARD PRODUCT LIST

Optical Film

- ITO film

No.	Model No.	Width(mm)	Length(mm)	Square(m ²)	Thickness(um)	Resistance
1	Oike KA500PS1-175	510	90	45.9	175	450
2	Oike KA500PS1-175	510	85	43.35	175	450
3	Oike KA500PS1-175	510	17	8.67	175	450
4	Oike KA500PS1-175	510	85	43.35	175	450
5	Oike KA500PS1-175	510	80	40.8	175	450
6	Oike KA500PS1-175	510	75	38.25	175	450
7	Oike KA500PS1-175	510	85	43.35	175	450
8	Oike KA500PS1-175	510	34	17.34	175	450
9	Oike KA500PS1-188	510	80	40.8	188	450
10	Oike KA500PS1-188	510	35	17.85	188	450
11	Oike KA500PS1-188	510	80	40.8	188	450
12	ITO_AG-240	395	110	43.45	240	ITO coated
13	ITO_AG-240	395	110	43.45	240	ITO coated
14	ITO_AG-240	395	111	43.845	240	ITO coated
15	ITO_AG-240	395	1100	39.5	240	ITO coated
16	ITO_AG-240	395	99	39.105	240	ITO coated
17	ITO_AG-240	395	110	43.45	240	ITO coated
18	ITO_AG-240	395	100	39.5	240	ITO coated
19	ITO_AG-240	395	105	41.475	240	ITO coated
20	ITO_AG-240	395	101	39.895	240	ITO coated
21	ITO_AG-240	395	100	39.5	240	ITO coated
22	ITO_AG-240	395	100	39.5	240	ITO coated
23	ITO_AG-240	395	105	41.475	240	ITO coated
24	ITO_AG-240	395	100	39.5	240	ITO coated
25	ITO_AG-240	395	100	39.5	240	ITO coated
26	ITO_AG-240	395	111	43.845	240	ITO coated
27	ITO_AG-240	395	100	39.5	240	ITO coated
28	ITO_AG-240	395	100	39.5	240	ITO coated
29	ITO_AG-240	395	100	39.5	240	ITO coated
30	ITO_AG-240	395	110	43.45	240	ITO coated
31	ITO_AG-240	395	100	39.5	240	ITO coated
32	ITO_AG-240	395	105	41.475	240	ITO coated
33	ITO_clear-240	395	120	47.4	240	ITO coated
34	ITO_clear-240	395	120.5	47.5975	240	ITO coated
35	ITO_clear-240	395	121.5	47.5975	240	ITO coated
36	ITO_clear-240	395	120	47.4	240	ITO coated
37	ITO_clear-240	395	120	47.4	240	ITO coated
38	ITO_clear-240	395	120	47.4	240	ITO coated
39	ITO_clear-240	395	120	47.4	240	ITO coated
40	ITO_clear-240	395	120	47.4	240	ITO coated
41	JW TUJ-0300-AG	380	110	41.8	188	300
42	JW TUJ-0300-AG	380	110	41.8	188	300
43	JW TUJ-0300-AG	380	98	37.24	188	300
44	JW TUJ-0300-AG	380	97	36.86	188	300
45	JW TUJ-0300-AG	380	112	42.56	188	300
46	JW TUJ-0300-AG	380	98.5	37.43	188	300
47	JW TUJ-0300-AG	380	98	37.24	188	300
48	JW TUJ-0300-AG	380	97	36.86	188	300
49	JW TUJ-0300-AG	380	100	38	188	300
50	JW TUJ-0300-AG	380	111.5	42.37	188	300
51	JW TUJ-0300-AG	380	115	43.7	188	300
52	JW TUJ-0300-AG	380	98.5	37.43	188	300
53	JW TUJ-0300-AG	380	111	42.18	188	300
54	JW TUJ-0300-AG	380	97.5	37.05	188	300
55	JW TUJ-0300-AG	380	97	36.86	188	300
56	JW TUJ-0300-AG	380	97	36.86	188	300
57	JW TUJ-0300-AG	380	100	38	188	300
58	JW TUJ-0400-AC	450	97	43.65	188	400
59	JW TUJ-0400-AC	450	98.5	44.325	188	400
60	JW TUJ-0400-AC	450	35	15.75	188	400
61	188-AGAC NAC-400-10	500	52	26	188	ITO coated
62	188-AGAC NAC-400-10	500	89	44.5	188	ITO coated
63	188-AGAC NAC-400-10	500	85	42.5	188	ITO coated
64	Nitto Denko G400L-TFMP	500	70	35	180	400
65	Nitto Denko G401L-TFMP	500	77	38.5	180	400
66	Nitto Denko G402L-TFMP	500	142	71	180	400

Optical Poly Materials of Fresnel Factory

This document describes the optical characteristics of Polymers of Fresnel Factory, such as the transmittance by wavelength band, tensile strength and etc. To choose a right material and production methods are essential to achieve proper optical property. If you need assistance please feel free to contact, ashton@fresnelfactory.com. Fresnel Factory Inc.

also support design for optics and tooling as your requirements.

The table below summarizes the characteristics of the materials mentioned in this document.

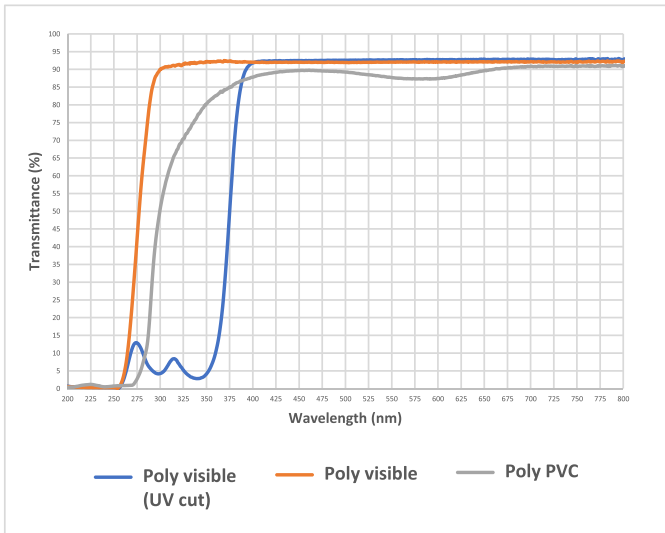
The table does not include PMMA used for casting, PET flim+UV resin used for roll-to-roll, and PMMA film used for hot-embossing.

Also Fresnel Factory has all the general optical materials in addition to the materials mentioned above.

Material Name	Main Wavelength	Main Wavelength Transmittance	Tensile Strength	*Impact Strength	*Hardness (Rockwell Scale)	*HDT (0.46Mpa)	Properties
Poly visible (UV cut)	Visible	92.65%	66Mpa	16J/m	90(M Scale)	82°C	UV cut
Poly visible		92.06%	-	-	-	-	UV transmission
Poly PVC		89.16%	-	-	-	-	Thin, Flexible
Poly NIR212	Near Infrared	91.46%	62Mpa	694J/m	70(M Scale)	137°C	High strength High HDT
Poly FIR 200	Far Infrared (8~13um)	42.81%	24.5Mpa	30.15J/m	-	73°C	High Transmittance
Poly FIR 25		19.24%	26Mpa	70J/m	75 (R Scale)	93°C	High HDT

Optical Poly Materials of FresnelFactory

Material for visible(400~750nm) light



Fresnel Factory has 3 different material for visible light.

Two PMMA based material, which is Poly visible(UV cut) and Poly visible, and one PVC based, which is Poly PVC. Poly visible(UV cut) is also used for Near Infrared depend on purpose.

Reference _____

*HDT(Heat Deflection Temperature) : It exhibits heat resistance at a specific temperature when the sample has displacement of 2.5mm under a specific load.

*Hardness : Abrasion resistance

*Izod Impact strength : Impact resistance

Poly visible(UV cut) and Poly visible



(F=2mm to F=2,000mm circle Fresnel lens)

-Transmittance (%)

Material name	Poly visible(UV cut)	Poly visible
UVB(280~315nm)	6.3%	84.05%
UVA(315~400nm)	31.04%	92.65%
Visible(400~750nm)	92.65%	92.06%

FresnelFactory has Poly visible (UV cut) and Poly visible. Poly visible series is mainly produced by using hot-press(precise heat compression mold) using a pre-formed sheet with a thickness from 1mm to 5mm. This materials are using for Circle Fresnel, cylindrical Fresnel, LED lights, CPV and Large, some of MLA and Lenticular, and wide angle mirror.

- Properties

Max Tensile strength	Impact strength	Hardness	HDT(0.45Map)	Melt Flow rate(230/3.8kg)
66Mpa	16J/m	Rockwell M sale 90	82°C	14g/10min

PMMA has the best visible light transmittance and weather resistance among resins. It has excellent hardness, abrasion resistance and heat resistance. Specific gravity is more than half lighter than glass and strength is similar to inorganic glass. In fact, PMMA has excellent strength and weather resistance, so it is used for aquariums that need to withstand high water pressure and taillights for automobiles exposed to weathering.

Since the melt flow rate is not good at 14g/10min (based on 230/3.8kg), high-pressure injection is required and the sprue runner and gate must be enlarged.

Therefore, Fresnel Factory is producing PMMA lenses by hot pressing most likely. Fresnel Factory provides custom-sized PMMA lenses by precision laser cutting.

Optical Poly Materials of Fresnel Factory

◆ Poly PVC



| Credit card magnifier |

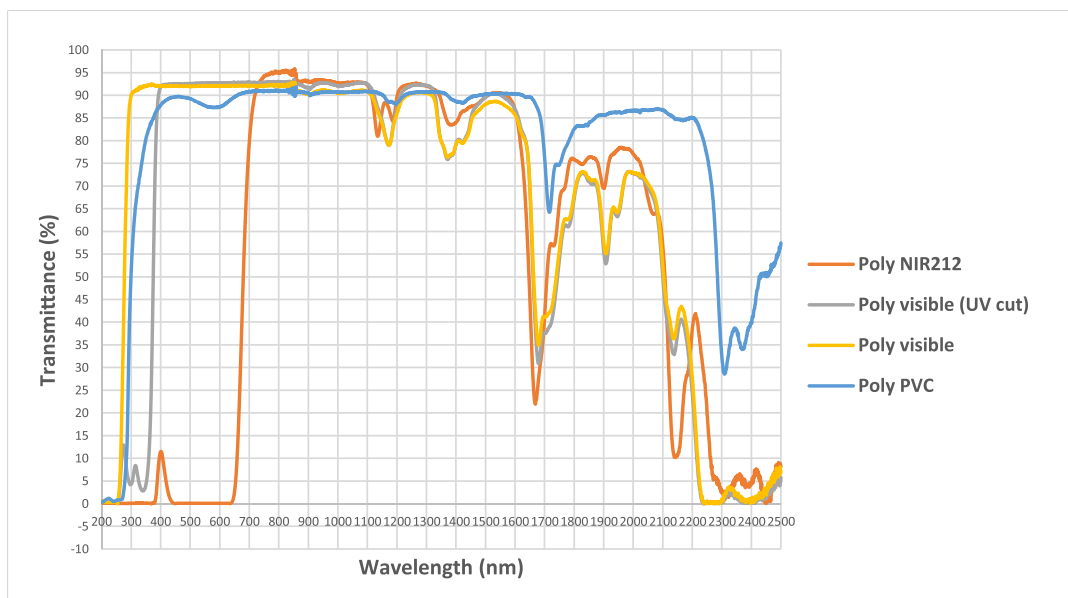
From the nature of PVC, it has excellent processability and can be produced with a thickness thinner than PMMA, normally Poly PVC is 0.4mm. Stiffness can be adjusted according to the amount of plasticizer. Poly PVC is low material cost and good productivity. It is mainly used for mass production of inexpensive consumable lenses, such as credit card magnifiers, which have low optical point quality. Sharpness of each prism is also low compared to PMMA.

- Transmittance (%)

Material name	UVB(280~315nm)	UVA(315~400nm)	Visible(400~750nm)
Poly PVC	40.23%	80.06%	89.16%

The visible wavelength transmittance of Poly PVC is 89.16% at 0.4mm thickness.

◇ Material for NIR(Near Infrared) wavelength



(Graph2 Transmittance of NIR(near infrared) material)

Optical Poly Materials of Fresnel Factory

◆ Poly NIR212



(Fresnel Factory NIR lenses)

-Transmittance (%)

Material name	Poly NIR212
UV and Visible(280~750nm)	6.96%
NIR(750~1,400nm)	91.46%

Poly NIR212 shows very excellent transmittance in the NIR (750~1400nm) and blocks most of the UV and visible Wavelength. It blocks 93.07% of UV and visible wavelength and shows an average transmittance of 91.46% in the main wavelength of Near Infrared.

Poly NIR212 not only has high transmittance of NIR, but also acts as a band pass filter of visible wavelength to prevent malfunction of the photo diode. Poly NIR212 is produced and supplied by custom-made, and mainly produced by injection method.

- Properties

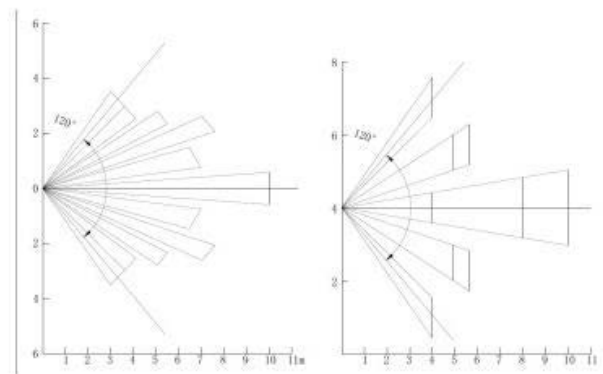
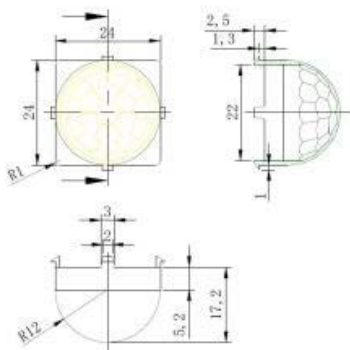
Max tensile strength	*Impact strength	*Hardness	*HDT(0.45Map)	Melt Flow rate(230/3.8kg)
62Mpa	694J/m	Rockwell M sale 70	137°C	20g/10min

Poly NIR212 has excellent tensile strength, impact strength, hardness and HDT. Fresnel Factory uses Poly NIR212 for NIR sensing devices exposed to high temperatures and vibrations in the vehicle during summer.

◇ Material for PIR/FIR(8~13um) wavelength

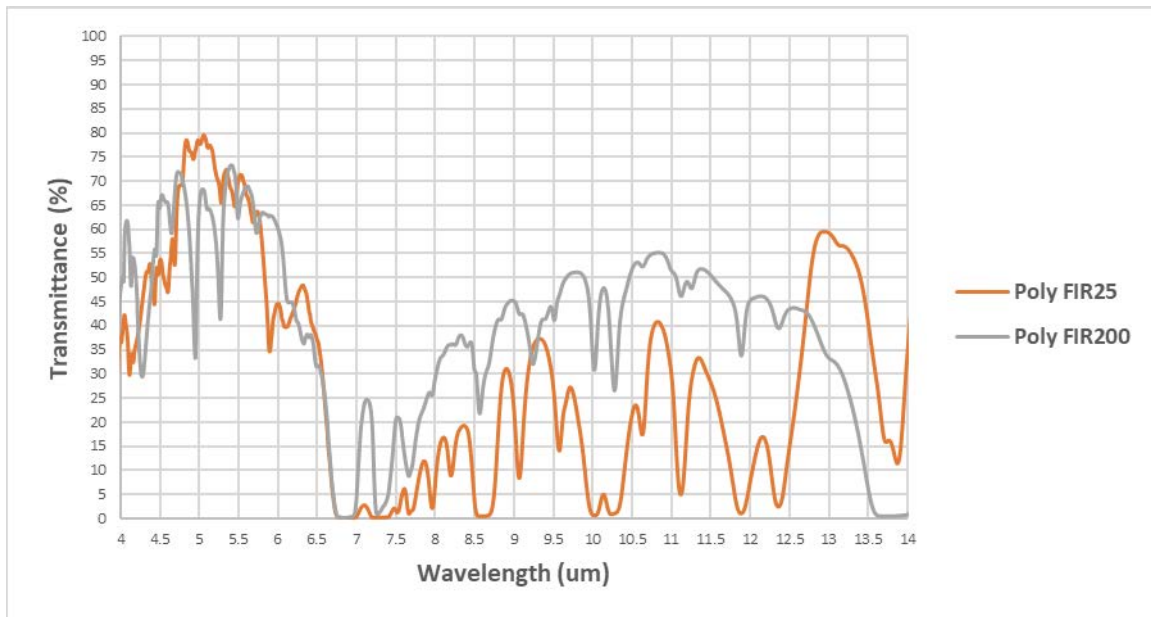
The thermopile and passive infrared sensor that is using for motion sensor detects the wavelength of 8~13um.

Without Fresnel lens, the sensor only can detect less than 1m distance and narrower space with lens. To work with Pyroelectric detector and thermopile, Fresnel lens that collects infrared rays as a sensor is required. Fresnel Factory manufactures Fresnel lenses for passive infrared and absolute temperature sensors.



<Dimension and FOV(Dome Type Fresnel Lens FOV)>

Optical Poly Materials of Fresnel Factory



(Graph3 Transmittance of PIR, FIR(Far infrared) material)

Material is important to have a wide FOV and excellent Far Infrared transmittance. Therefore, Fresnel Factory is using Poly FIR200 and Poly FIR25, which have a wide FOV and excellent FIR transmittance.

◆ Poly FIR 200



(Fresnel Factory's PIR lens)

-Transmittance (%)

Material name	Poly FIR200
8~12um	42.81% at 0.65T

PIR(Passive Infrared) sensor detects infrared rays in the 8~12um wavelength emitted from body temperature. Fresnel Factory's Poly FIR200 has an excellent transmittance of 42.81% on average from 8~12um wavelength when 0.65T.

Optical Poly Materials of FresnelFactory

- Properties

Max tensile strength	Impact strength	HDT(0.45Map)	Melt Flow Rate
24.5Mpa	30.15J/m	73°C	20g/min

The price is low since the productivity is high because the melt flow rate is excellent and the time required for injection is short. Despite having the above properties, it is not suitable for use in environments exposed to high temperatures, impacts, and scratches due to its low hardness, impact strength, and HDT compared to Poly FIR25.

◆ Poly FIR 25



(Fresnel Factory's temperature sensor)

-Transmittance (%)

Material name	Poly FIR25
8~12um	19.24% at 0.50T

The FIR (Far-Infrared) sensor detects temperature by measuring infrared emitted from an object and is used in thermal imaging cameras. The transmittance of Poly FIR25 in the 8~13um wavelength is 19.24% on average, which is lower than that of Poly FIR200. However, Poly FIR25 has better Hardness and high resistance of temperature.

- Properties

Max tensile strength	*Impact strength	*Hardness	*HDT(0.45Map)	Meltflow Rate
26Mpa	70J/m	Rockwell M scale 70	130°C	2.5g/min

Poly FIR25 has higher tensile strength, impact strength, and HDT than Poly FIR200. Due to the above properties, Poly FIR25 is used for temperature sensing sensors exposed to high temperatures despite low transmittance.

Reference

*HDT(Heat Deflection Temperature) : It exhibits heat resistance at a specific temperature when the sample has displacement of 2.5mm under a specific load.

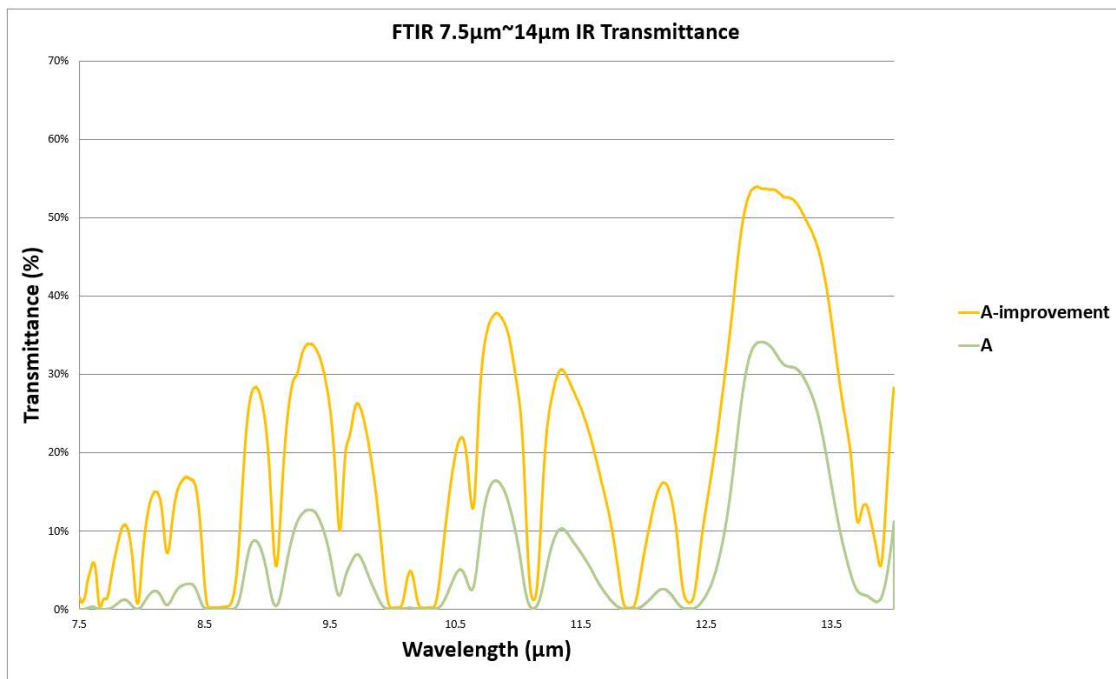
*Hardness : Abrasion resistance

*Izod Impact strength : Impact resistance

Optical Poly Materials of Fresnel Factory

◆ Transmittance enhance process of Fresnel Factory

Fresnel Factory Inc. has excellence skill in mold design, tooling and production for optics. With this skills, we are manufacturing lenses to higher quality. Therefore, even with the same poly material, Fresnel Factory produces better transmittance. The graph below is an example of an achievement for improving transmittance.



<(Poly FIR25) Comparison graph before and after the transmittance improvement process>

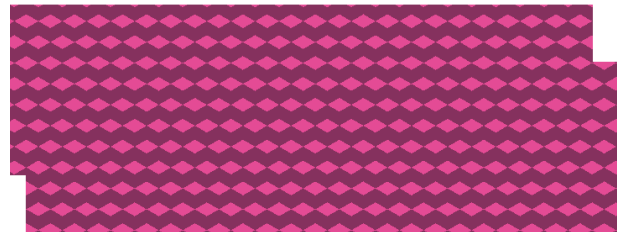
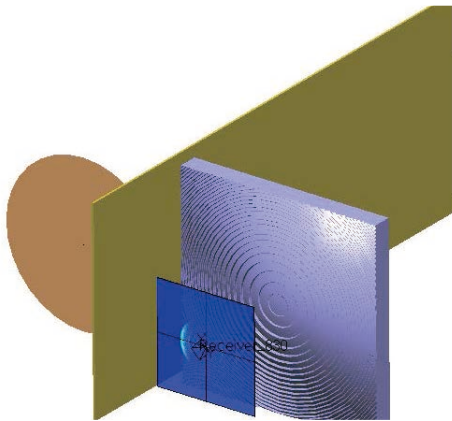
Poly FIR25 was originally a material having a low transmittance of about 10%, but the transmittance increased by more than 10% through a process of improving the transmittance of Fresnel Factory. Fresnel Factory is a professional optical company that undergoes an injection process that align with optical properties of each material.

Application

◆ Design of Security Optical System with Fresnel lens and Reflectors

Recently, more and more people are asking about security optics. Usually, security optics use invisible infrared rays. It is constructed by transmitting infrared light to receive light coming back from an object. There was also an inquiry about the development of a security optics system in FresnelFactory, So we proceeded with the design of an infrared optical system using Fresnel lenses and reflectors. The following is about the design of an infrared optical system for security conducted by FresnelFactory. FresnelFactory has modeled NIR lasers, reflectors, and receiver Fresnel lenses through its optical design program.

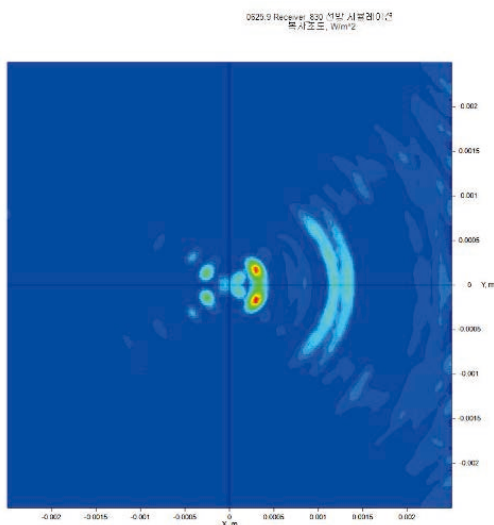
◆ Optical system and Reflector



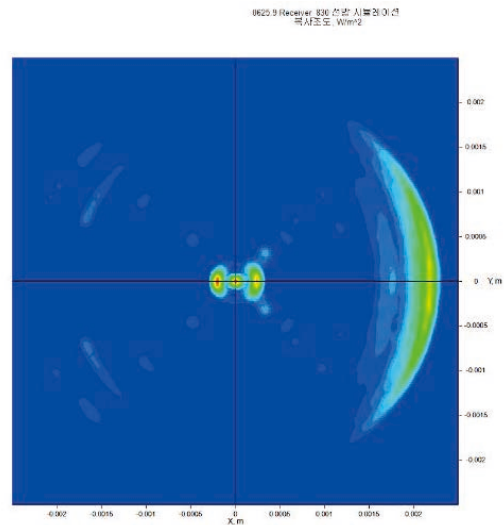
The security optical system must have as much light as possible on the receptor sensor to increase detection sensitivity. Therefore, we designed it in the form of a reflector, reflecting it with a reflector, and collecting as much light as possible with a Fresnel lens.

The picture below shows a comparison of the distribution of light that reaches the sensor before(left) optimizing and the distribution of light that reaches the sensor after(right) optimizing.

◆ Fresnel lens pre-optimization



◆ Fresnel lens after optimization



If you look at the results of the optical simulation, the results of fresnel lens pre-optimization(left) show a lot of light spread out of the sensor. After optimization, light was collected into the sensor, and the total amount of light that reached the sensor was about twice the increase.

Application

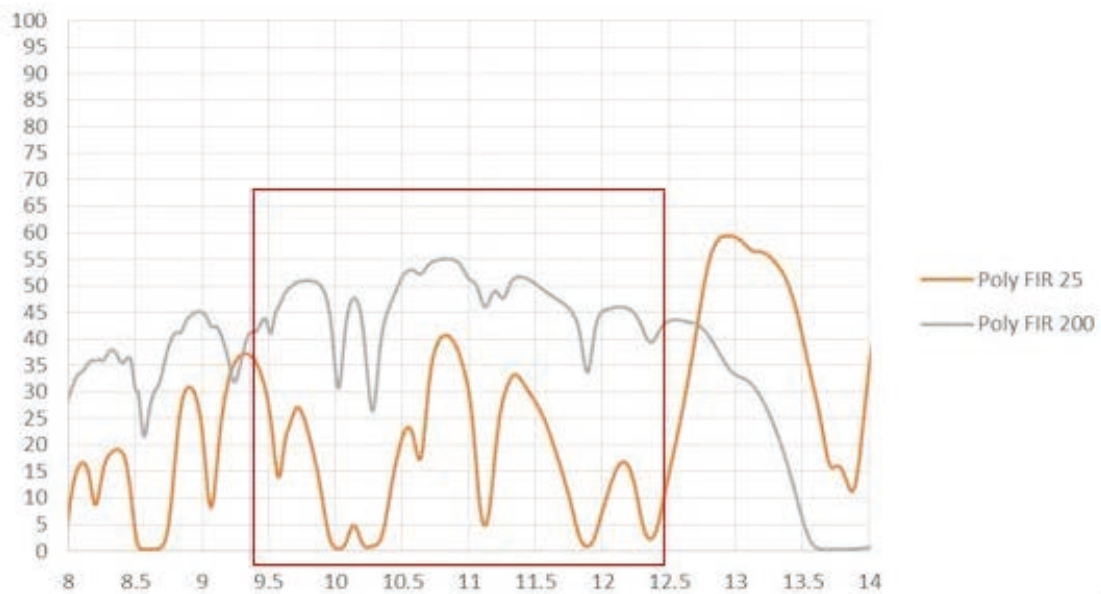
◆ Development and Supply of Covers and Lens for Infrared Bolometer Arrays (Grid-EYE) Sensor

Recently, more and more questions have been raised about the cover and lens for Infrared bolometer arrays (Grid-EYE) sensors that detect human body movements.

In general, lenses that act as covers or covers should be used to prevent Infrared bolometer arrays (Grid-EYE) sensors from extruding due to the risk of breakage.

However, the existing material has a low transmittance, so its usability is very poor.

Therefore, Fresnel Factory Korea has developed lenses for Infrared bolometer array (Grid-EYE) sensors. The development lens increases sensor detection distance and sensitivity, and not only has a higher transmittance rate compared to the commonly used material made of Fresnel Factory Korea's development material, but also serves as a sensor protection cover.



< Existing Materials vs Fresnel Factory Development Materials, Transfusion Rate Data Comparison >

◆ Lens for Grid-EYE Sensor



Along with increased transmittance, multiple types of lenses can be developed and applied immediately to the desired environment.

Fresnel Factory Korea is a professional optical company that develops and supplies lenses in the desired area accurately and quickly based on material data.

◆ Design request form for PIR Fresnel lens ◆

Project	-Name of product or project		Customer	Company	
				Name	
				E-mail	
				Telephone	
No.			data	Note / Measurement	
1	FIELD OF VIEW	TOP VIEW		Degree	
		SIDE VIEW		Degree	
2	Detection distance	TOP VIEW		meter or ft.	
		SIDE VIEW		meter or ft.	
3	WorkingconditionWor kingcondition	Indoo	<input type="checkbox"/>		
		Outdoor	<input type="checkbox"/>		
		Tempurature			
4	Usage	Lighting	<input type="checkbox"/>		
		Smarthome	<input type="checkbox"/>		
		Security	<input type="checkbox"/>		
		PET IMMUNE	<input type="checkbox"/>		
5	Sensor type	DUAL elements	<input type="checkbox"/>		
		QUAD elements	<input type="checkbox"/>		
6	Installed height			meter or ft.	
7	Tilting angle			Degree	
8	Lens Color	White	<input type="checkbox"/>		
		Balck	<input type="checkbox"/>		
		Other			
Do you have a drawing of lens?			<input type="checkbox"/>		
9	Shape of lens	Dome	<input type="checkbox"/>		
		Sheet	<input type="checkbox"/>		
10	Overall size			mm or inch	
11	Distance between sensor and lens			mm or inch	



Fresnel Factory



+82 70-7605-0693



+82 70-7605-0020



ashton@fresnelfactory.com