

TEST REPORT

Analysis Research Center

Page : 1/4

Report No. : KR-200420-431
Client : FresnelFactory Korea
504ho, 38, Yeongtong-ro 323beon-gil, Yeongtong-gu,
Suwon-si, Gyeonggi-do

The following merchandise was submitted and identified by the client

Commodity : PIR Fresnel lens
Received date : April. 20. 2020.
Test Performing date : April. 20. 2020. ~ April. 29. 2020.
Issued date : April. 29. 2020.
Test Results : For further details, Please Refer to following pages

Testing Person : J.H.KIM *Kim*

Lab Manager : J.M.AHN *Ahn*

1004 (Gosaek-dong, SUWON HUMAN SKY VALLEY) 33 Omokcheon-ro 132beon-gil, Gwonseon-gu, Suwon-si, Gyeonggi-do, KOREA

TEL : 031-227-4280~1

FAX : 031-227-4291

E-mail : kqti@kqti.co.kr

Home : <http://www.kqti.co.kr>

This test report is issued by company subject to its general conditions of service printed overleaf. Attention is drawn to the limitations of liability, indemnification and jurisdictional issues defined therein. The results shown in this test report refer only to the samples tested unless otherwise stated. This test report cannot be reproduced except in full without prior written permission of the company. If you want to verify the authenticity of the report, please contact the above number.

TEST REPORT

Analysis Research Center

Page : 2/4

Report No. : KR-200420-431
Sample No. : 170
Sample Description : PIR Fresnel lens

Heavy Metals

Test items	Test Method	Unit	MDL	Results
Cadmium (Cd)	ICP-AES	mg/kg	0.5	N.D
Lead (Pb)	ICP-AES	mg/kg	5	N.D
Mercury (Hg)	ICP-AES	mg/kg	2	N.D
Hexavalent Chromium (Cr ⁶⁺)	UV/VIS	mg/kg	1	N.D

Flame Retardants-PBBs/PBDEs

Test items	Test Method	Unit	MDL	Results
PBBs (Polybrominated Biphenyls)				
Monobromobiphenyl	GC/MS	mg/kg	50	N.D
Dibromobiphenyl	GC/MS	mg/kg	50	N.D
Tribromobiphenyl	GC/MS	mg/kg	50	N.D
Tetrabromobiphenyl	GC/MS	mg/kg	50	N.D
Pentabromobiphenyl	GC/MS	mg/kg	50	N.D
Hexabromobiphenyl	GC/MS	mg/kg	50	N.D
Heptabromobiphenyl	GC/MS	mg/kg	50	N.D
Octabromobiphenyl	GC/MS	mg/kg	50	N.D
Nonabromobiphenyl	GC/MS	mg/kg	50	N.D
Decabromobiphenyl	GC/MS	mg/kg	50	N.D
PBDEs (Polybrominated Diphenyl Ethers)				
Monobromodiphenyl ether	GC/MS	mg/kg	50	N.D
Dibromodiphenyl ether	GC/MS	mg/kg	50	N.D
Tribromodiphenyl ether	GC/MS	mg/kg	50	N.D
Tetrabromodiphenyl ether	GC/MS	mg/kg	50	N.D
Pentabromodiphenyl ether	GC/MS	mg/kg	50	N.D
Hexabromodiphenyl ether	GC/MS	mg/kg	50	N.D
Heptabromodiphenyl ether	GC/MS	mg/kg	50	N.D
Octabromodiphenyl ether	GC/MS	mg/kg	50	N.D
Nonabromodiphenyl ether	GC/MS	mg/kg	50	N.D
Decabromodiphenyl ether	GC/MS	mg/kg	50	N.D

NOTE : 1) N.D = Not Detected (<MDL)

2) MDL = Method Detection Limit

1004 (Gosaek-dong, SUWON HUMAN SKY VALLEY) 33 Omokcheon-ro 132beon-gil, Gwonseon-gu, Suwon-si, Gyeonggi-do, KOREA

TEL : 031-227-4280~1

FAX : 031-227-4291

E-mail : kqti@kqti.co.kr

Home : <http://www.kqti.co.kr>

This test report is issued by company subject to its general conditions of service printed overleaf. Attention is drawn to the limitations of liability, indemnification and jurisdictional issues defined therein. The results shown in this test report refer only to the samples tested unless otherwise stated. This test report cannot be reproduced except in full without prior written permission of the company. If you want to verify the authenticity of the report, please contact the above number.

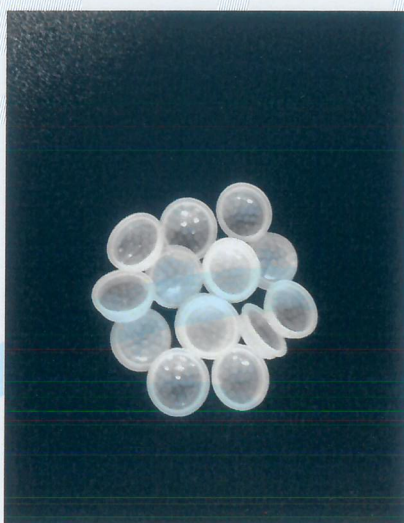
TEST REPORT

Analysis Research Center

Page : 3/4

Report No. : KR-200420-431
Sample No. : 170
Sample Description : PIR Fresnel lens

Picture of sample as Received :



END

1004 (Gosaek-dong, SUWON HUMAN SKY VALLEY) 33 Omokcheon-ro 132beon-gil, Gwonseon-gu, Suwon-si, Gyeonggi-do, KOREA

TEL : 031-227-4280~1

FAX : 031-227-4291

E-mail : kqti@kqti.co.kr

Home : <http://www.kqti.co.kr>

This test report is issued by company subject to its general conditions of service printed overleaf. Attention is drawn to the limitations of liability, indemnification and jurisdictional issues defined therein. The results shown in this test report refer only to the samples tested unless otherwise stated. This test report cannot be reproduced except in full without prior written permission of the company. If you want to verify the authenticity of the report, please contact the above number.

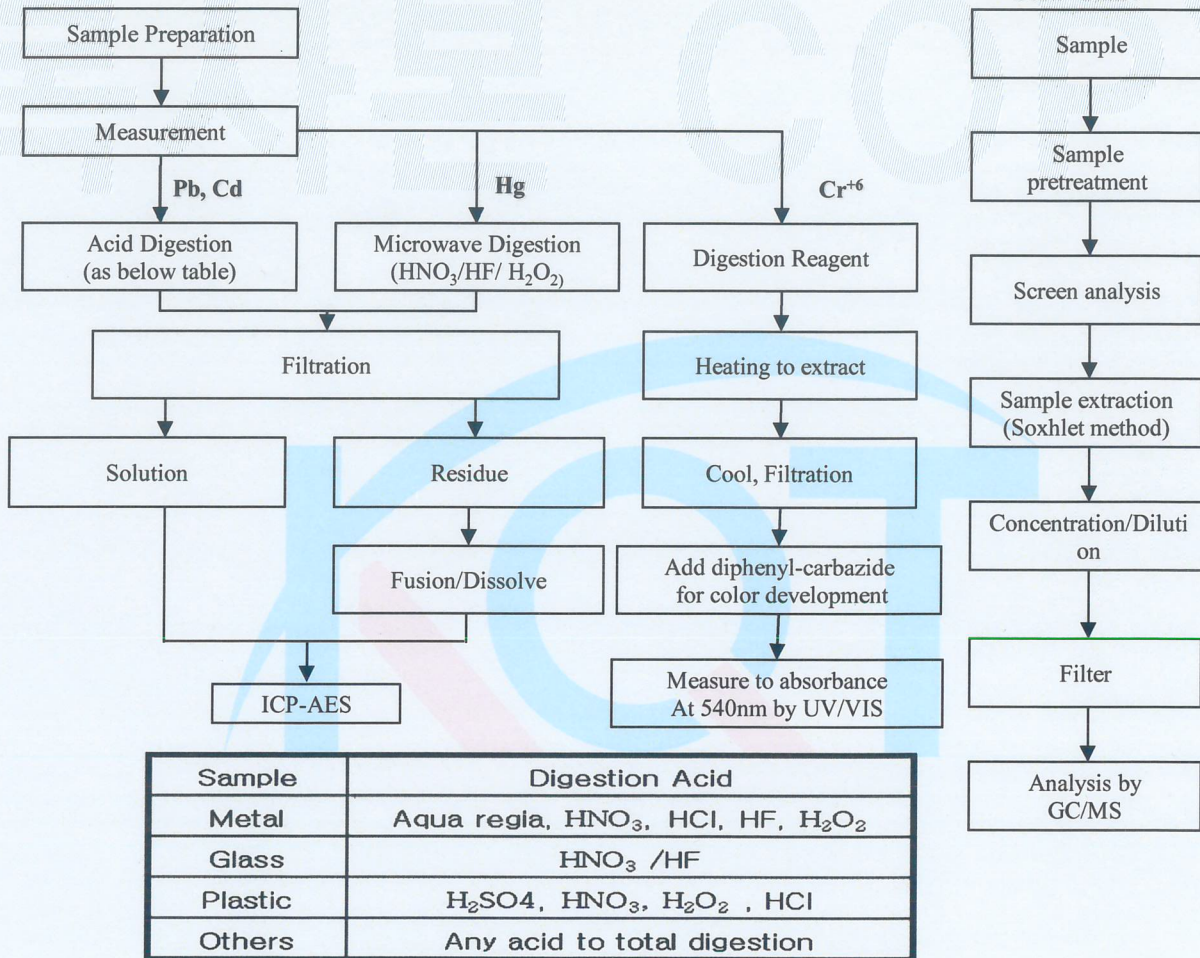
TEST REPORT

Analysis Research Center

1) These samples were dissolved totally by method according to below flow chart.

< Metal analytical Flow Chart >

< PBB/PBDE analytical Flow Chart >



1004 (Gosaek-dong, SUWON HUMAN SKY VALLEY) 33 Omokcheon-ro 132beon-gil, Gwonseon-gu, Suwon-si, Gyeonggi-do, KOREA

TEL : 031-227-4280~1

FAX : 031-227-4291

E-mail : kqti@kqti.co.kr

Home : <http://www.kqti.co.kr>

This test report is issued by company subject to its general conditions of service printed overleaf. Attention is drawn to the limitations of liability, indemnification and jurisdictional issues defined therein. The results shown in this test report refer only to the samples tested unless otherwise stated. This test report cannot be reproduced except in full without prior written permission of the company. If you want to verify the authenticity of the report, please contact the above number.